

Алматы (7273)495-231
Ангарск (3955)60-70-56
Архангельск (8182)63-90-72
Астрахань (8512)99-46-04
Барнаул (3852)73-04-60
Белгород (4722)40-23-64
Благовещенск (4162)22-76-07
Брянск (4832)59-03-52
Владивосток (423)249-28-31
Владикавказ (8672)28-90-48
Владимир (4922)49-43-18
Волгоград (844)278-03-48
Вологда (8172)26-41-59
Воронеж (473)204-51-73
Екатеринбург (343)384-55-89

Иваново (4932)77-34-06
Ижевск (3412)26-03-58
Иркутск (395)279-98-46
Казань (843)206-01-48
Калининград (4012)72-03-81
Калуга (4842)92-23-67
Кемерово (3842)65-04-62
Киров (8332)68-02-04
Коломна (4966)23-41-49
Кострома (4942)77-07-48
Краснодар (861)203-40-90
Красноярск (391)204-63-61
Курск (4712)77-13-04
Курган (3522)50-90-47
Липецк (4742)52-20-81

Магнитогорск (3519)55-03-13
Москва (495)268-04-70
Мурманск (8152)59-64-93
Набережные Челны (8552)20-53-41
Нижний Новгород (831)429-08-12
Новокузнецк (3843)20-46-81
Ноябрьск (3496)41-32-12
Новосибирск (383)227-86-73
Омск (3812)21-46-40
Орел (4862)44-53-42
Оренбург (3532)37-68-04
Пенза (8412)22-31-16
Петрозаводск (8142)55-98-37
Псков (8112)59-10-37

Пермь (342)205-81-47
Ростов-на-Дону (863)308-18-15
Рязань (4912)46-61-64
Самара (846)206-03-16
Саранск (8342)22-96-24
Санкт-Петербург (812)309-46-40
Саратов (845)249-38-78
Севастополь (8692)22-31-93
Симферополь (3652)67-13-56
Смоленск (4812)29-41-54
Сочи (862)225-72-31
Ставрополь (8652)20-65-13
Сургут (3462)77-98-35
Сыктывкар (8212)25-95-17
Тамбов (4752)50-40-97

Тверь (4822)63-31-35
Тольятти (8482)63-91-07
Томск (3822)98-41-53
Тула (4872)33-79-87
Тюмень (3452)66-21-18
Ульяновск (8422)24-23-59
Улан-Удэ (3012)59-97-51
Уфа (347)229-48-12
Хабаровск (4212)92-98-04
Чебоксары (8352)28-53-07
Челябинск (351)202-03-61
Череповец (8202)49-02-64
Чита (3022)38-34-83
Якутск (4112)23-90-97
Ярославль (4852)69-52-93

Россия +7(495)268-04-70

Казахстан +7(7172)727-132

Киргизия +996(312)96-26-47

www.fourwinds.nt-rt.ru | | fse@nt-rt.ru

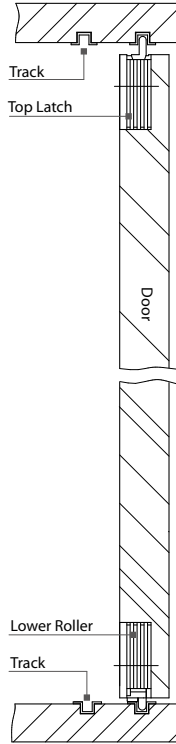
Технические характеристики на двери раздвижные для шкафа, гардеробные двери, фурнитуру Econo II, Econo I, Elite-PV, Elite-PT, Elite-SV, Elite-ST КОМПАНИИ **Four Winds**

Виды товаров: двери раздвижные для шкафа, гардеробные двери, фурнитура для раздвижных дверей для тяжелых условий эксплуатации, защелки, ролики, ходовые части и др.

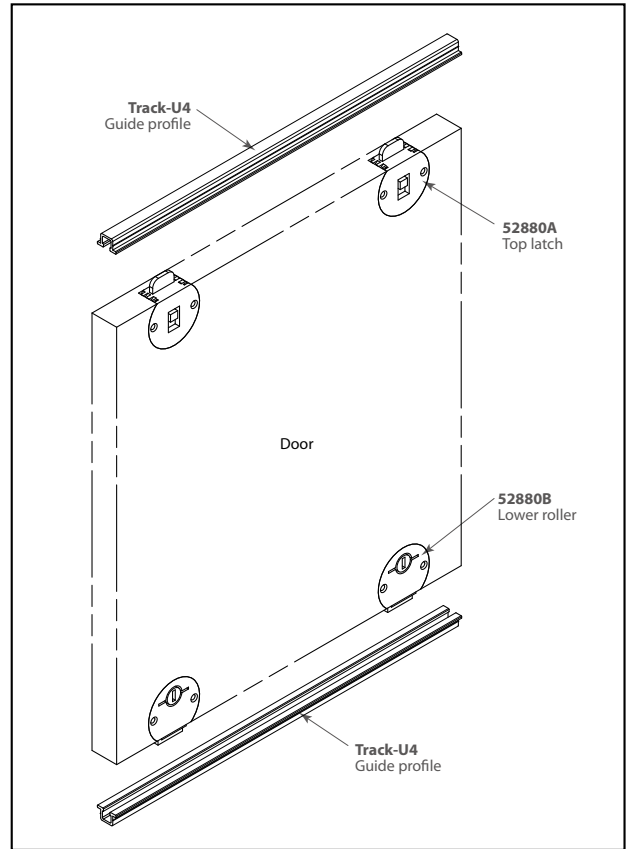
03-1 Cabinet Sliding Door

52880 Econo II Sliding Door Fittings

- * All plastic
- * For wooden door
- * Loading capacity: 12 kgs per door

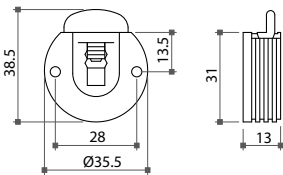


Side View



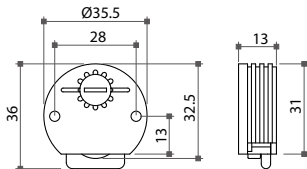
52880A Top Latch

- * Plastic, brown or white color
- * Groove size (WxHxD): Ø35.5x31x13mm



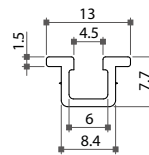
52880B Lower Roller

- * Plastic, brown or white color
- * Groove size (WxHxD): Ø35.5x31x13mm



Track-U4 Guide Profile

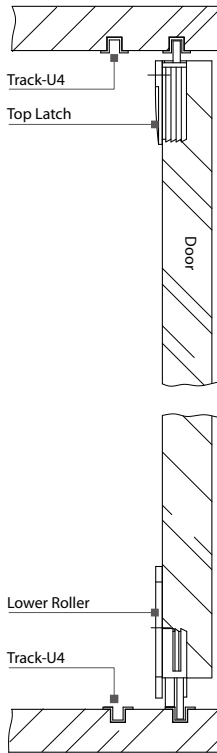
- * Knock-in fixing
- * Plastic, brown or white color



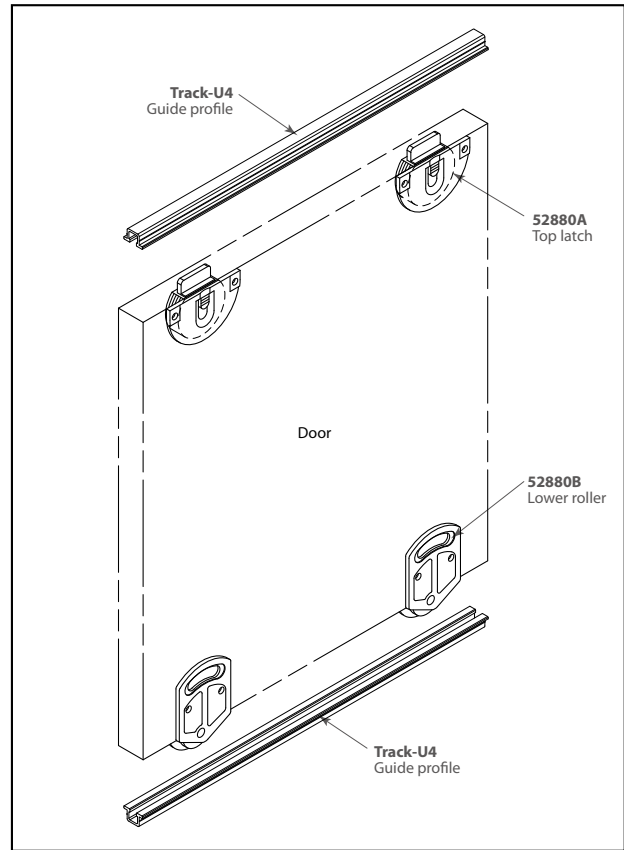
03-1 Cabinet Sliding Door

52850 Econo I Sliding Door Fittings

- * All plastic
- * For wooden door
- * Loading capacity: 12 kgs per door

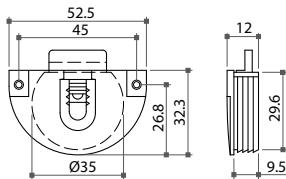


Side View



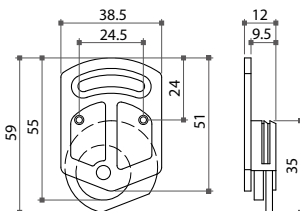
52850A Top Latch

- * Plastic, brown or white color
- * Groove size (WxHxD): $\text{\O}35 \times 29.6 \times 9.5 \text{mm}$



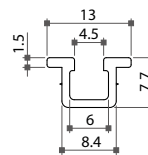
52850B Lower Roller

- * Plastic, brown or white color
- * Groove size (WxHxD): $\text{\O}35 \times 9.5 \text{mm}$



Track-U4 Guide Profile

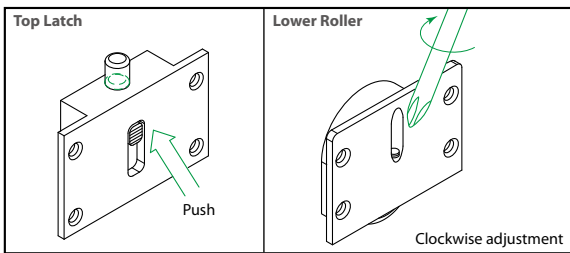
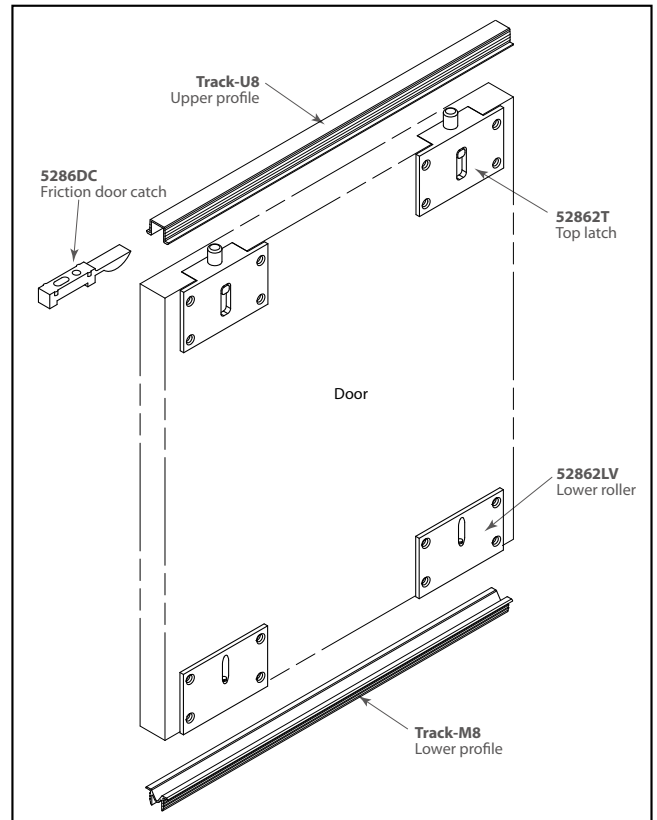
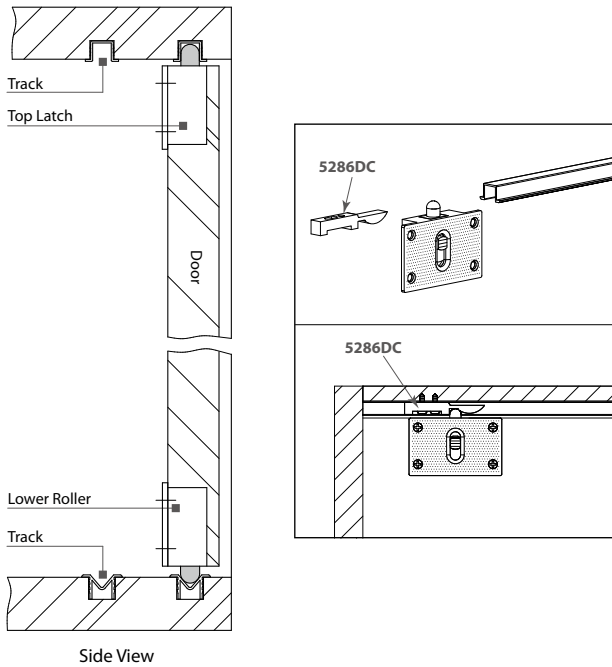
- * Knock-in fixing
- * Plastic, brown or white color



03-1 Cabinet Sliding Door

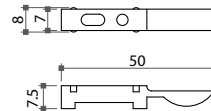
52862 Elite-PV Sliding Door Fittings

- * All plastic, V type roller guider
- * Facilitating smooth movement of sliding wooden door
- * Loading capacity: 20 kgs per door



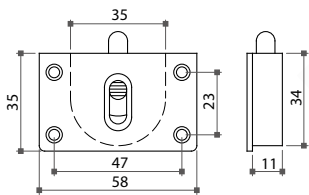
5286DC Friction Door Catch

* All plastic, black



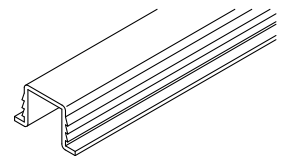
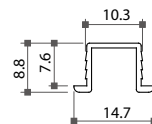
52862T Top Latch

* Plastic, black or brown color
* Groove size (WxHxD): 35x34x11mm



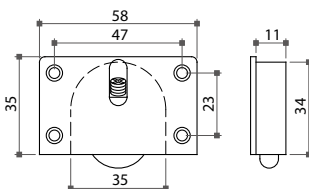
Track-U8 Upper Profile

* Aluminium, natural anodized or in other colors



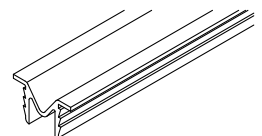
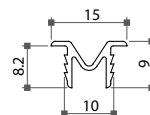
52862LV Lower Roller, V type

* Plastic, black or brown color
* Groove size (WxHxD): 35x34x11mm



Track-M8 Lower Profile, V type

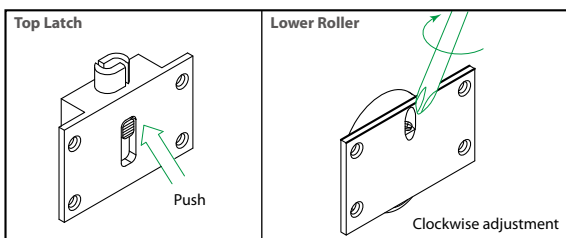
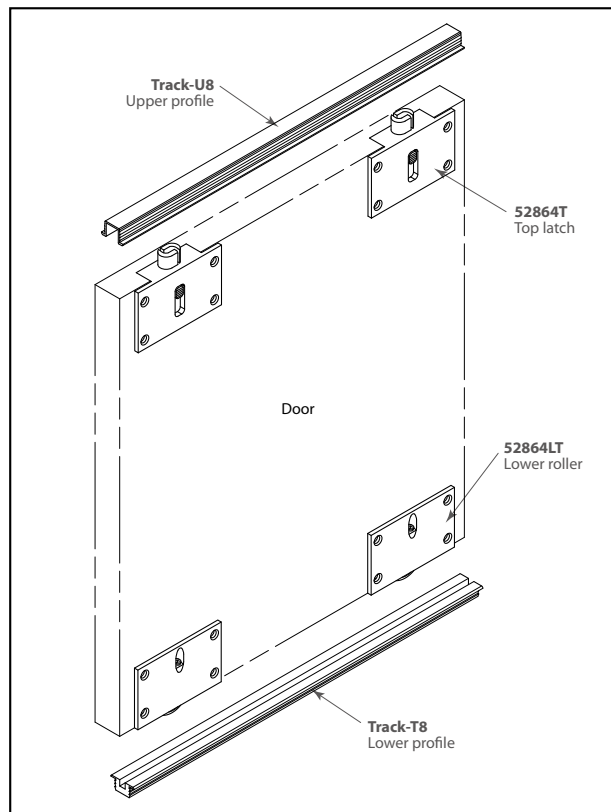
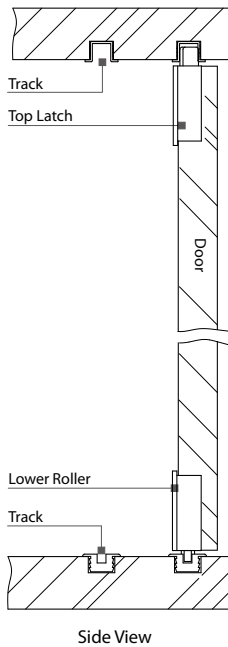
* Aluminium, natural anodized or in other colors



03-1 Cabinet Sliding Door

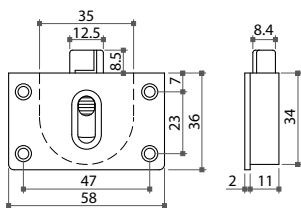
52864 Elite-PT Sliding Door Fittings

- * All plastic, T type roller guider
- * For wooden door
- * Loading capacity: 20 kgs per door



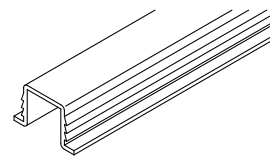
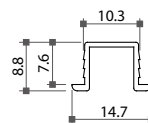
52864T Top Latch, T type

- * Plastic, black or brown color
- * Groove size (WxHxD): 35x34x11mm



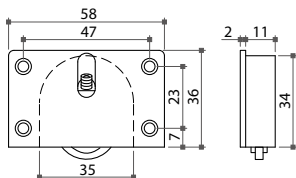
Track-U8 Upper Profile

- * Aluminium, natural anodized or in other colors



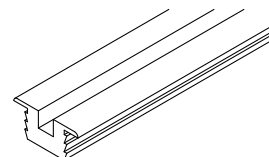
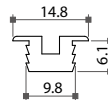
52864LT Lower Roller, T type

- * Plastic, black or brown color
- * Groove size (WxHxD): 35x34x11mm



Track-T8 Lower Profile, T type

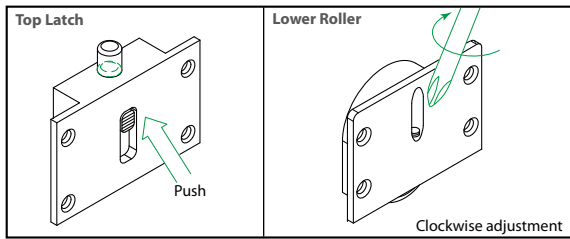
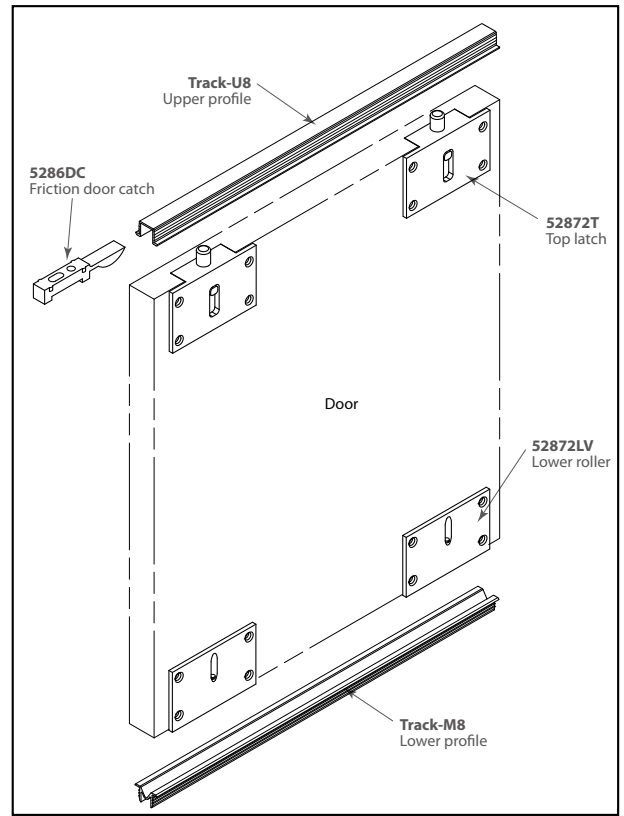
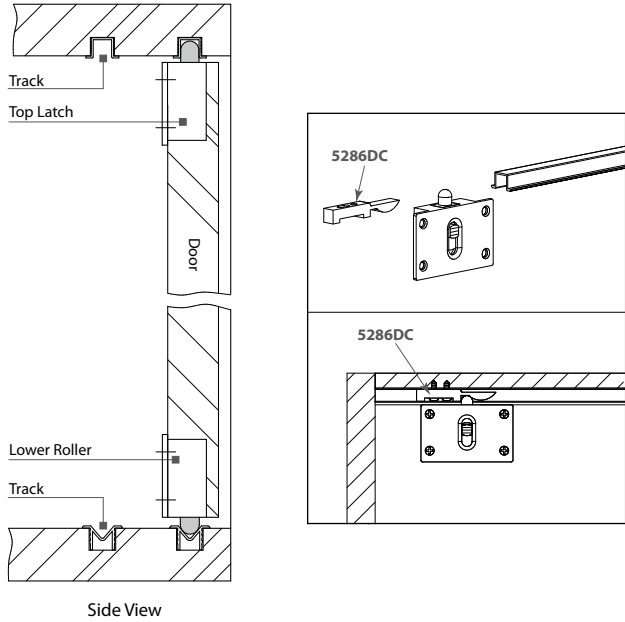
- * Aluminium, natural anodized or in other colors



03-2 Wardrobe Sliding Door

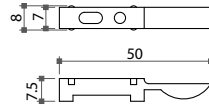
52872 Elite-SV Sliding Door Fittings

- * Stainless steel case, V type roller guider
- * Facilitating smooth movement of sliding wooden door
- * Loading capacity: 30 kgs per door



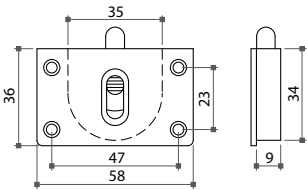
5286DC Friction Door Catch

* All plastic, black



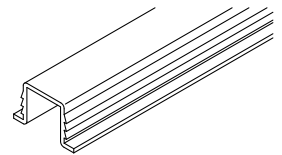
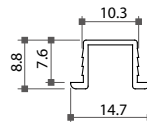
52872T Top Latch

- * Groove size (WxHxD): 35x34x9mm



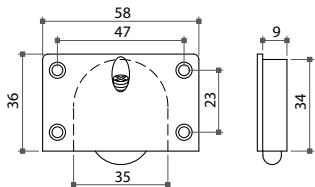
Track-U8 Upper Profile

- * Aluminium, natural anodized or in other colors



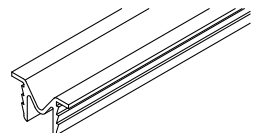
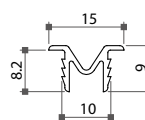
52872LV Lower Roller, V type

- * Groove size (WxHxD): 35x34x9mm



Track-M8 Lower Profile, V type

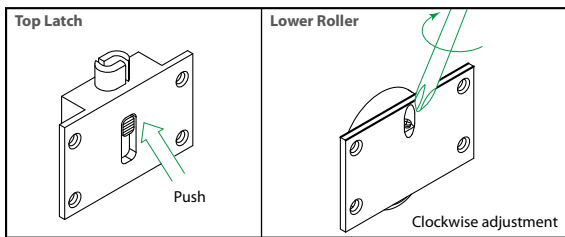
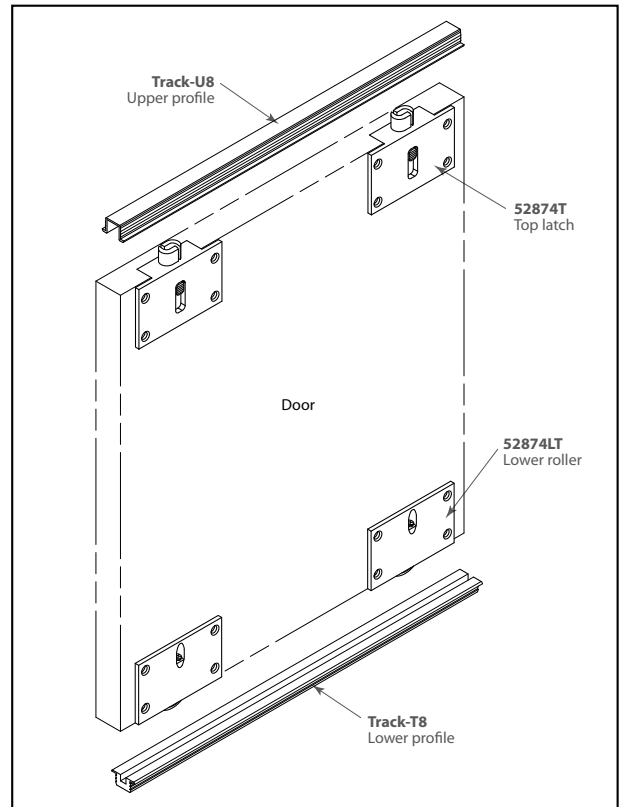
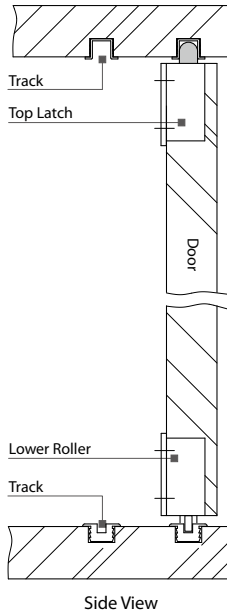
- * Aluminium, natural anodized or in other colors



03-2 Wardrobe Sliding Door

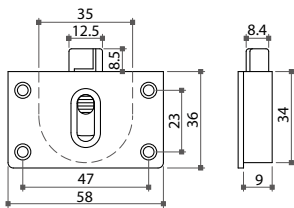
52874 Elite-ST Sliding Door Fittings

- * Stainless steel case, T type roller guider
- * For wooden door
- * Loading capacity: 30 kgs per door



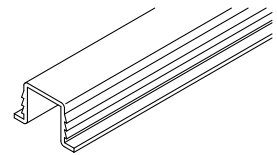
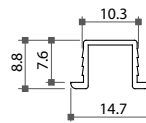
52874T Top Latch

- * Groove size (WxHxD): 35x34x9mm



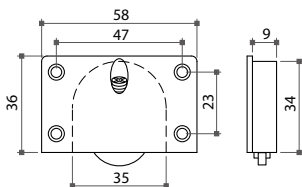
Track-U8 Upper Profile

- * Aluminium, natural anodized or in other colors



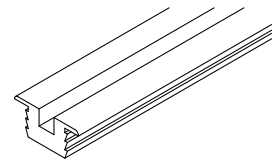
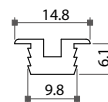
52874LT Lower Roller, T type

- * Groove size (WxHxD): 35x34x9mm



Track-T8 Lower Profile, T type

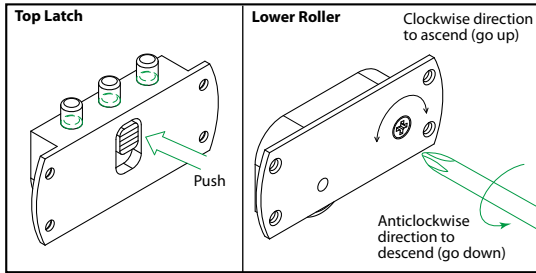
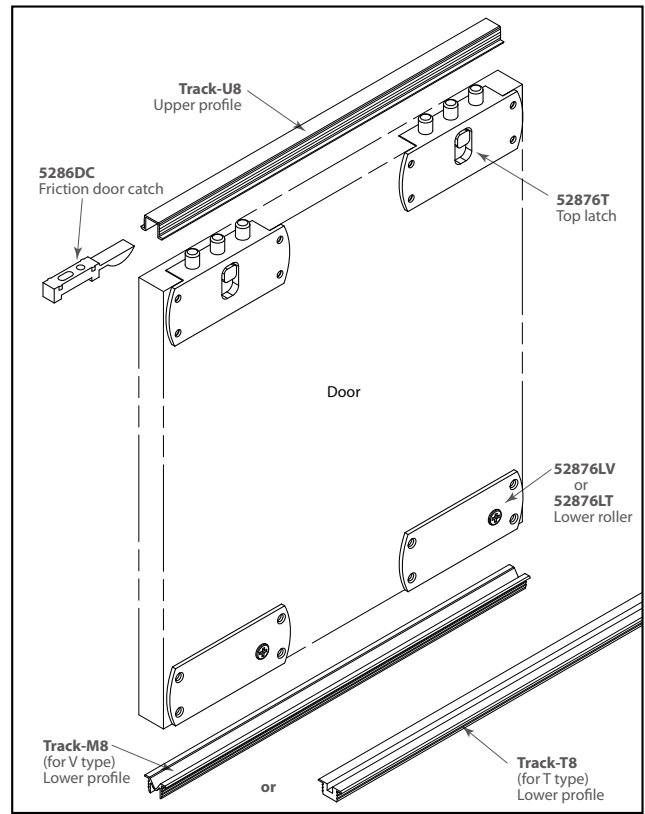
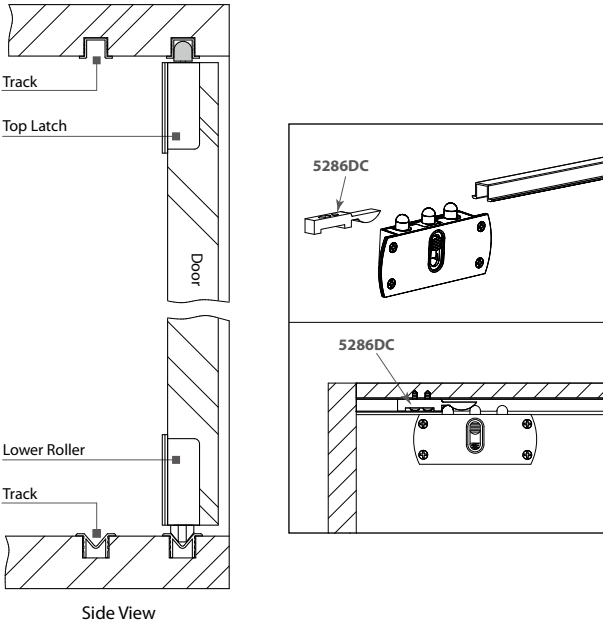
- * Aluminium, natural anodized or in other colors



03-2 Wardrobe Sliding Door

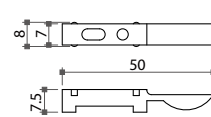
52876 Heavy-Duty Sliding Door Fittings

- * Stainless steel (#304) case, V or T type roller guider
- * For wooden door
- * Loading capacity: 80 kgs per door



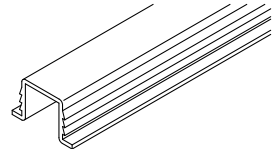
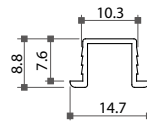
5286DC Friction Door Catch

* All plastic, black



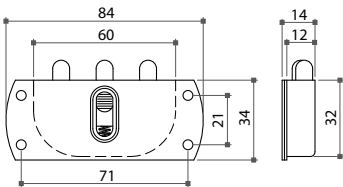
Track-U8 Upper Profile

* Aluminium, natural anodized or in other colors



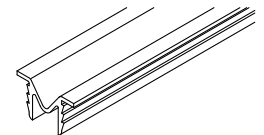
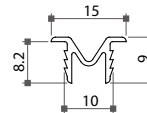
52876T Top Latch

* Groove size (WxHxD): 60x32x12mm



Track-M8 Lower Profile, V type

* Aluminium, natural anodized or in other colors

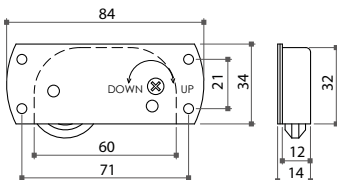


Lower Roller

52876LV V type

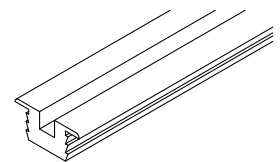
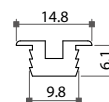
52876LT T type

* Groove size (WxHxD): 60x32x12mm



Track-T8 Lower Profile, T type

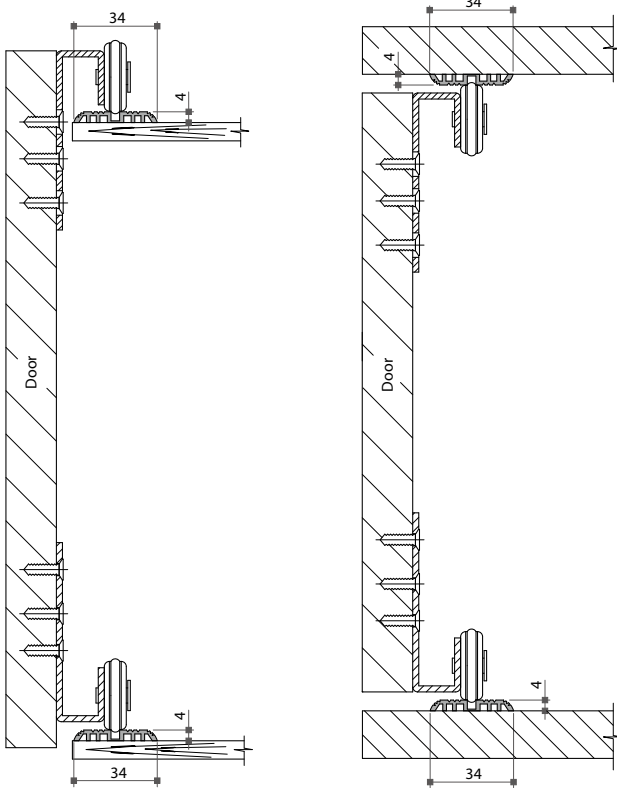
* Aluminium, natural anodized or in other colors



03-2 Wardrobe Sliding Door

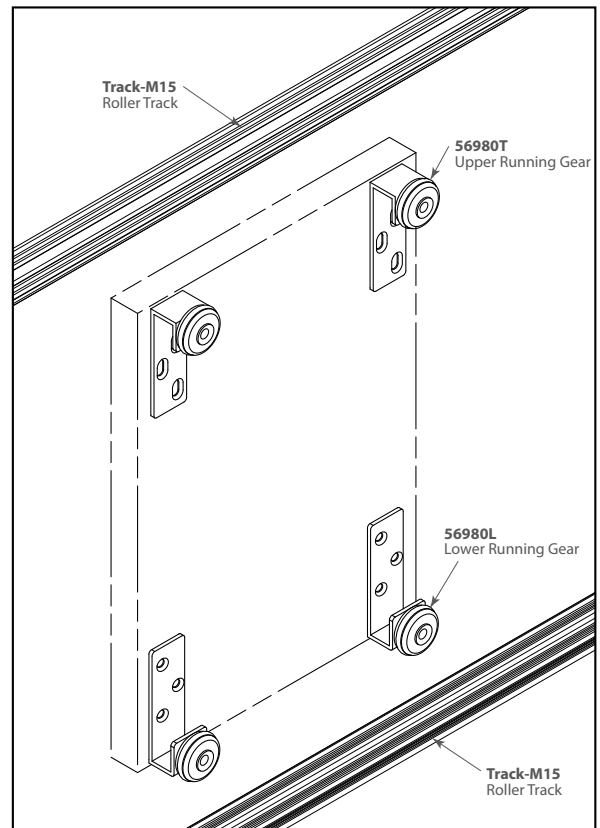
56980 Slim Sliding Door Fittings

- * For both wood and aluminium framed doors
- * Loading capacity: 12 kgs per door

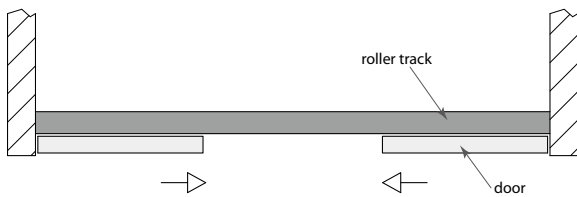


Overlay sliding door

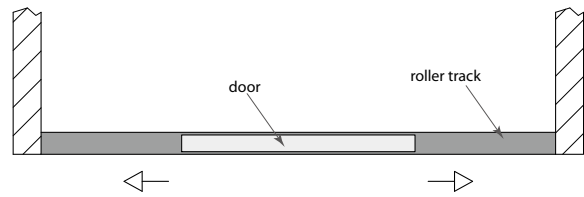
Inlay sliding door



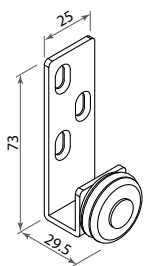
Overlay sliding door



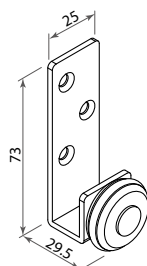
Inlay sliding door



56980T Upper Running Gear

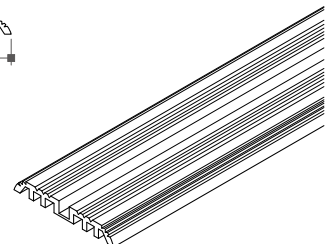


56980L Lower Running Gear



Track-M15 Roller Track, for top and bottom

* Aluminium, natural anodized



Алматы (7273)495-231
Ангарск (3955)60-70-56
Архангельск (8182)63-90-72
Астрахань (8512)99-46-04
Барнаул (3852)73-04-60
Белгород (4722)40-23-64
Благовещенск (4162)22-76-07
Брянск (4832)59-03-52
Владивосток (423)249-28-31
Владикавказ (8672)28-90-48
Владимир (4922)49-43-18
Волгоград (844)278-03-48
Вологда (8172)26-41-59
Воронеж (473)204-51-73
Екатеринбург (343)384-55-89

Иваново (4932)77-34-06
Ижевск (3412)26-03-58
Иркутск (395)279-98-46
Казань (843)206-01-48
Калининград (4012)72-03-81
Калуга (4842)92-23-67
Кемерово (3842)65-04-62
Киров (8332)68-02-04
Коломна (4966)23-41-49
Кострома (4942)77-07-48
Краснодар (861)203-40-90
Красноярск (391)204-63-61
Курск (4712)77-13-04
Курган (3522)50-90-47
Липецк (4742)52-20-81

Магнитогорск (3519)55-03-13
Москва (495)268-04-70
Мурманск (8152)59-64-93
Набережные Челны (8552)20-53-41
Нижний Новгород (831)429-08-12
Новокузнецк (3843)20-46-81
Ноябрьск (3496)41-32-12
Новосибирск (383)227-86-73
Омск (3812)21-46-40
Орел (4862)44-53-42
Оренбург (3532)37-68-04
Пенза (8412)22-31-16
Петрозаводск (8142)55-98-37
Псков (8112)59-10-37

Пермь (342)205-81-47
Ростов-на-Дону (863)308-18-15
Рязань (4912)46-61-64
Самара (846)206-03-16
Саранск (8342)22-96-24
Санкт-Петербург (812)309-46-40
Саратов (845)249-38-78
Севастополь (8692)22-31-93
Симферополь (3652)67-13-56
Смоленск (4812)29-41-54
Сочи (862)225-72-31
Ставрополь (8652)20-65-13
Сургут (3462)77-98-35
Сыктывкар (8212)25-95-17
Тамбов (4752)50-40-97

Тверь (4822)63-31-35
Тольятти (8482)63-91-07
Томск (3822)98-41-53
Тула (4872)33-79-87
Тюмень (3452)66-21-18
Ульяновск (8422)24-23-59
Улан-Удэ (3012)59-97-51
Уфа (347)229-48-12
Хабаровск (4212)92-98-04
Чебоксары (8352)28-53-07
Челябинск (351)202-03-61
Череповец (8202)49-02-64
Чита (3022)38-34-83
Якутск (4112)23-90-97
Ярославль (4852)69-52-93

Россия +7(495)268-04-70

Казахстан +7(7172)727-132

Киргизия +996(312)96-26-47

www.fourwinds.nt-rt.ru | | fse@nt-rt.ru