

<b>Алматы</b> (7273)495-231	<b>Иваново</b> (4932)77-34-06	<b>Магнитогорск</b> (3519)55-03-13	<b>Пермь</b> (342)205-81-47	<b>Тверь</b> (4822)63-31-35
<b>Ангарск</b> (3955)60-70-56	<b>Ижевск</b> (3412)26-03-58	<b>Москва</b> (495)268-04-70	<b>Ростов-на-Дону</b> (863)308-18-15	<b>Тольятти</b> (8482)63-91-07
<b>Архангельск</b> (8182)63-90-72	<b>Иркутск</b> (395)279-98-46	<b>Мурманск</b> (8152)59-64-93	<b>Рязань</b> (4912)46-61-64	<b>Томск</b> (3822)98-41-53
<b>Астрахань</b> (8512)99-46-04	<b>Казань</b> (843)206-01-48	<b>Набережные Челны</b> (8552)20-53-41	<b>Самара</b> (846)206-03-16	<b>Тула</b> (4872)33-79-87
<b>Барнаул</b> (3852)73-04-60	<b>Калининград</b> (4012)72-03-81	<b>Нижний Новгород</b> (831)429-08-12	<b>Саранск</b> (8342)22-96-24	<b>Тюмень</b> (3452)66-21-18
<b>Белгород</b> (4722)40-23-64	<b>Калуга</b> (4842)92-23-67	<b>Новокузнецк</b> (3843)20-46-81	<b>Санкт-Петербург</b> (812)309-46-40	<b>Ульяновск</b> (8422)24-23-59
<b>Благовещенск</b> (4162)22-76-07	<b>Кемерово</b> (3842)65-04-62	<b>Ноябрьск</b> (3496)41-32-12	<b>Саратов</b> (845)249-38-78	<b>Улан-Удэ</b> (3012)59-97-51
<b>Брянск</b> (4832)59-03-52	<b>Киров</b> (8332)68-02-04	<b>Новосибирск</b> (383)227-86-73	<b>Севастополь</b> (8692)22-31-93	<b>Уфа</b> (347)229-48-12
<b>Владивосток</b> (423)249-28-31	<b>Коломна</b> (4966)23-41-49	<b>Омск</b> (3812)21-46-40	<b>Симферополь</b> (3652)67-13-56	<b>Хабаровск</b> (4212)92-98-04
<b>Владикавказ</b> (8672)28-90-48	<b>Кострома</b> (4942)77-07-48	<b>Орел</b> (4862)44-53-42	<b>Смоленск</b> (4812)29-41-54	<b>Чебоксары</b> (8352)28-53-07
<b>Владимир</b> (4922)49-43-18	<b>Краснодар</b> (861)203-40-90	<b>Оренбург</b> (3532)37-68-04	<b>Сочи</b> (862)225-72-31	<b>Челябинск</b> (351)202-03-61
<b>Волгоград</b> (844)278-03-48	<b>Красноярск</b> (391)204-63-61	<b>Пенза</b> (8412)22-31-16	<b>Ставрополь</b> (8652)20-65-13	<b>Череповец</b> (8202)49-02-64
<b>Вологда</b> (8172)26-41-59	<b>Курск</b> (4712)77-13-04	<b>Петрозаводск</b> (8142)55-98-37	<b>Сургут</b> (3462)77-98-35	<b>Чита</b> (3022)38-34-83
<b>Воронеж</b> (473)204-51-73	<b>Курган</b> (3522)50-90-47	<b>Псков</b> (8112)59-10-37	<b>Сыктывкар</b> (8212)25-95-17	<b>Якутск</b> (4112)23-90-97
<b>Екатеринбург</b> (343)384-55-89	<b>Липецк</b> (4742)52-20-81		<b>Тамбов</b> (4752)50-40-97	<b>Ярославль</b> (4852)69-52-93

Россия +7(495)268-04-70

Казахстан +7(7172)727-132

Киргизия +996(312)96-26-47

[www.fourwinds.nt-rt.ru](http://www.fourwinds.nt-rt.ru) | [fse@nt-rt.ru](mailto:fse@nt-rt.ru)

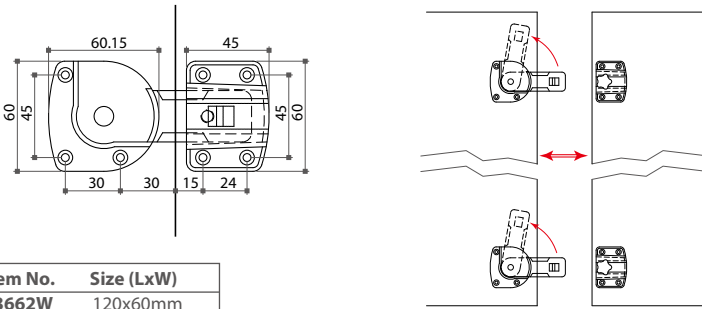
# Технические характеристики на фурнитуру для кровати и стола компании **Four Winds**

**Виды товаров:** петли для стеклянных дверей, пластиковые выравнивающие соединители, выравниватели столешницы, соединительные фитинги, соединители рабочей поверхности, поворотные болты, соединительные пластины, петли для стола, петли для складных столов, скрытые петли, шарниры для столов, кронштейны, опоры для крышки стола, поворотные механизмы для столешницы, роликовые опоры, наборы навинчивающихся креплений для кровати, конические щелевые соединители, подъемные механизмы, телескопические трещотки, ключи, механизмы газ-лифты и др.

# 10-1 Table Connectors

## 63662W Desk Tops Levelling Connector

- \* With handwheel tightening
- \* 2.6mm steel, zinc plated
- \* Size (LxW): 120x60mm at connecting position

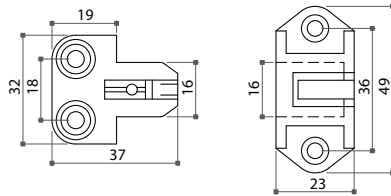


Item No.	Size (LxW)
63662W	120x60mm



## 10290 Plastic Levelling Connector

- \* Clip-on connection
- \* Material: plastic
- \* Color: brown

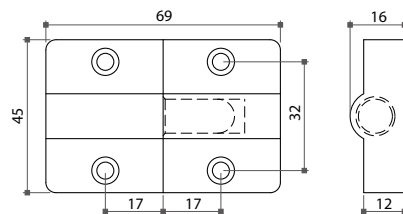


Item No.	Type
10290	clip-on



## 10370 Table Top Leveller

- \* Dowel-in connection
- \* Material: plastic
- \* Color: brown

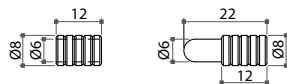


Item No.	Type
10370	dowel-in



## 58480 Table Top Connecting Fitting

- \* Material: steel
- \* Finish: yellow zinc plated

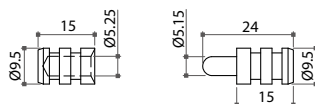


Item No.	Material
58480	steel



## 58481 Table Top Connecting Fitting

- \* Material: solid brass
- \* Finish: original



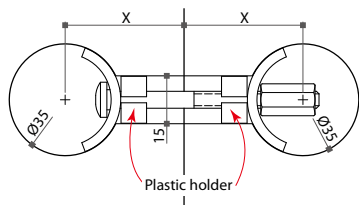
Item No.	Material
58481	solid brass



# 10-1 Table Connectors

## Work Surface Connector

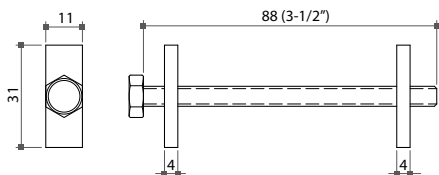
- \* Material: steel
- \* Finish: zinc plated
- \* One set consists of:  
2 C type plates, 1 hex nut and 1 bolt
- \* Additional flexible plastic holders for 15mm channel is available upon request



Item No.	Bolt length	X size
10621	65mm	32 ~ 41mm
10622	150mm	75 ~ 84mm
10625H	flexible plastic holder	

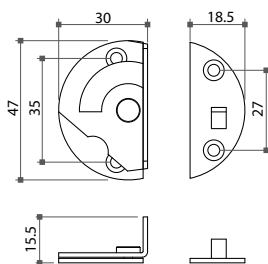
## 10642 Work Surface Fastener

- \* Material: steel
- \* Finish: zinc plated
- \* One set consists of:  
1 bolt (1/4-20x3-1/2" L.)  
1 rectangular washer ( 11mm W.x31mm L.x4mm T.)  
1 rectangular nut ( 11mm W.x31mm L.x4mm T.)



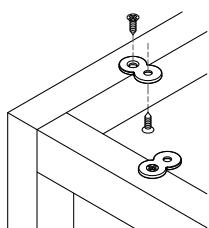
## 63671 Table Top Swivel Bolt

- \* Screw mount under table top
- \* Steel in bronze or yellow zinc plating
- \* 2 pcs/set

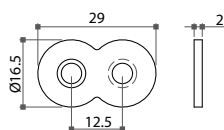


## 50127 Connecting Plate

- \* Steel, zinc plated
- \* Dimension: Ø16.5x29x2mm



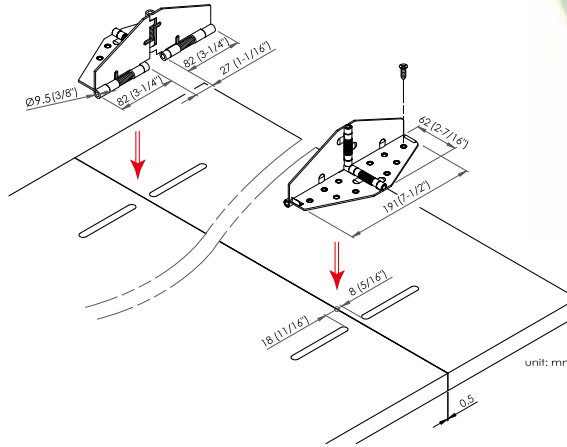
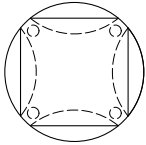
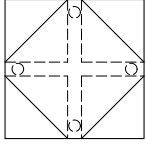
can also be used to connect table tops onto frames and carcasses



# 10-2 Table Hinges & Slides

## 22200 Table Flat-Top Hinge

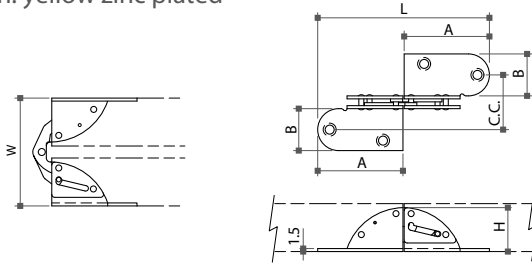
- \* Material: steel
- \* 2.0mm thickness
- \* Finish: yellow zinc plated



Item No.	Size (LxW)
22200	7-1/2"x2-3/4"

## Folding Leaf Hinge

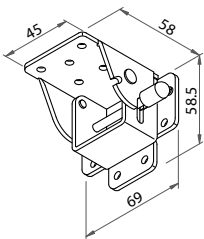
- \* Material: steel
- \* Recess-mounting
- \* For wood of 18, 22, 25, 30mm thickness
- \* Finish: yellow zinc plated



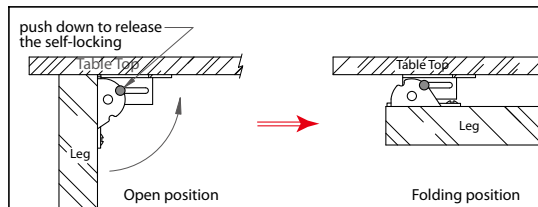
Item No.	L	A	B	C.C.	H	W
21492	86	42.7	21	27	18	45
21493	86	42.7	21	27	22	52.5
21494	85	42.7	21	22	25	58.5
21495	135	67	23	25	30	73

## 65800 Folding Table Hinge

- \* Controlled by a spring trigger to activate the lock mechanism
- \* Can be used for folding table or shelf



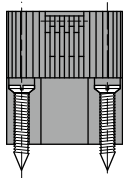
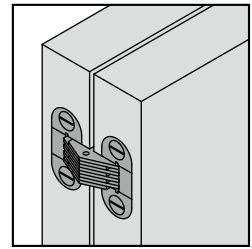
Item No.	Dimension
65800	69x58x58.5mm



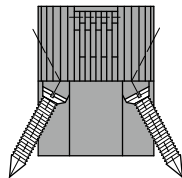
# 10-2 Table Hinges & Slides

## Solid Brass Concealed Hinge

- \* 180° opening concealed hinge
- \* Finish: nickel, satin chrome and black plated
- \* Fixed with chipboard screws straightly or obliquely



Straight screw fixing



Oblique screw fixing



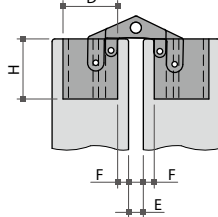
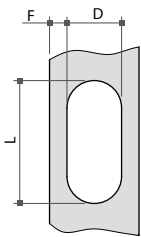
21571B



21572S



21572B

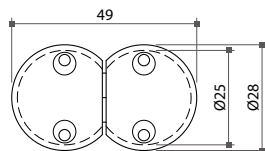


unit: mm

Item No.	D	H	L	E	F	Screw fixing
21571S	Ø12	15.5	24	2	3	oblique
21572S	Ø12	15.5	27	2	3	straight
21572B	Ø12	15.5	27	2	3	oblique

## 22890 Mortise Nylon Folding Table Hinge

- \* Plastic housing in brown or white, metal hinge arm in nickel plating
- \* Ø25x14mm depth drillhole



Item No.	Drilling hole (DxH)
22890	Ø25x14mm

# 10-2 Table Hinges & Slides

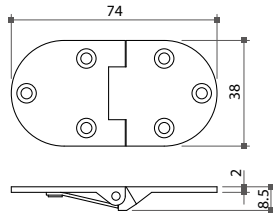
## Folding Table Hinges

- \* Solid brass in polished & brushed finish
- \* For small tables (classical coffee table)

### 20354 Round Folding Table Hinge

- \* Flush-closed with spring action
- \* 90° opening
- \* Size: 38x74x2mm

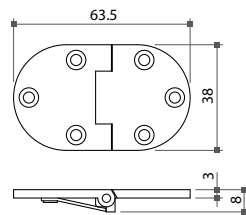
Item No.	Size
20354	38x74x2mm



### 20355 Round Folding Table Hinge

- \* Flush-closed with spring action
- \* 90° opening
- \* Size: 38x63.5x3mm

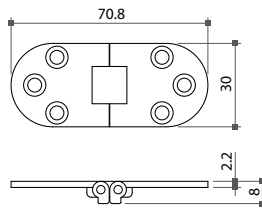
Item No.	Size
20355	38x63.5x3mm



### 20356 Round Folding Table Hinge

- \* Free-swing
- \* 180° opening
- \* Size: 30x70.8x2.2mm

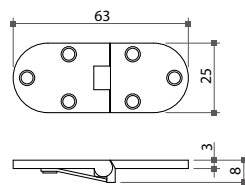
Item No.	Size
20356	30x70.8x2.2mm



### 20357 Round Folding Table Hinge

- \* Flush-closed with spring action
- \* 90° opening
- \* Size: 25x63x3mm

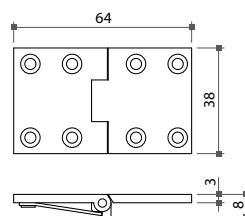
Item No.	Size
20357	25x63x3mm



### 20358 Square Folding Table Hinge

- \* Flush-closed with spring action
- \* 90° opening
- \* Size: 38x64x3mm

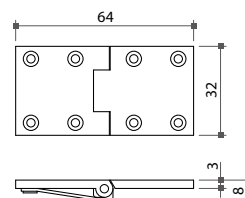
Item No.	Size
20358	38x64x3mm



### 20359 Square Folding Table Hinge

- \* Flush-closed with spring action
- \* 90° opening
- \* Size: 32x64x3mm

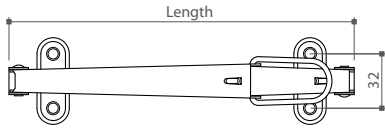
Item No.	Size
20359	32x64x3mm



# 10-2 Table Hinges & Slides

## 57402 Drop Leaf Support with Finger Pull

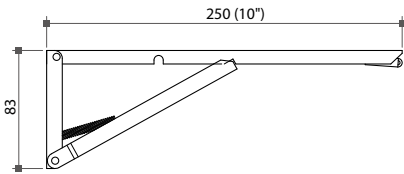
- \* Material: steel
- \* Finish: zinc, antique copper plated or black coated
- \* Length: 8"



Item No.	Length
57402	8"

## 65795 Slim type Self-Lock Drop Leaf Support

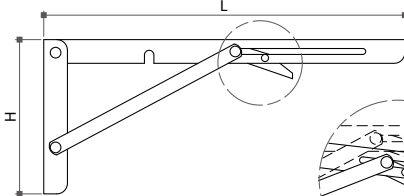
- \* Material: steel
- \* Finish: yellow zinc plated
- \* Loading capacity: 40 kgs per pair



Item No.	Length
65795	10"

## Square Type Self-Lock Folding Bracket

- \* Material: steel
- \* Colors: white, black or grey
- \* Loading capacity: 50 kgs per pair



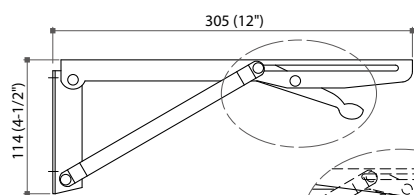
closed



Item No.	Size (LxH)
65760	305x114mm (12"x4-1/2")
65761	406x140mm (16"x5-1/2")

## 65770 Square Type Self-Lock Folding Bracket

- \* Material: steel
- \* Colors: white, black or grey
- \* With trigger
- \* Loading capacity: 50 kgs per pair



closed

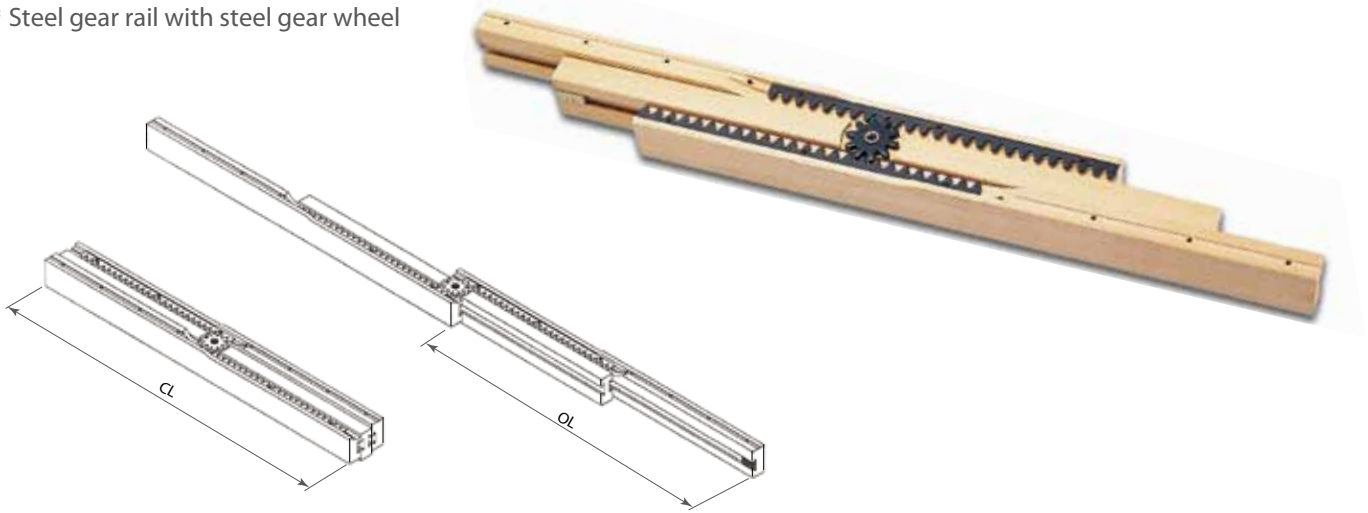


Item No.	Size (LxH)
65770	305x114mm

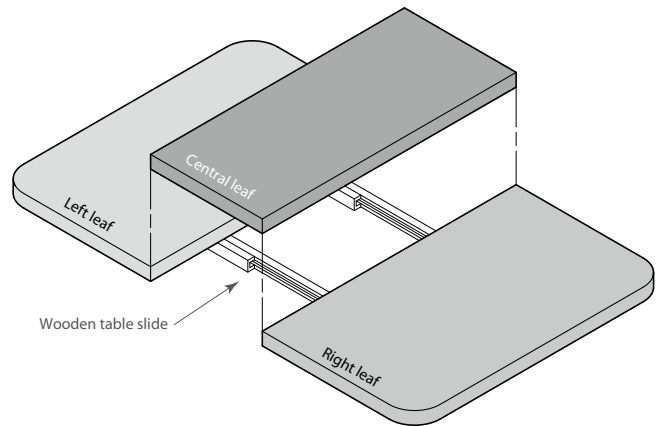
# 10-2 Table Hinges & Slides

## 6010 Wooden Table Slide - With Steel Gear Wheel

- \* Full extension
- \* Natural wood: red or white wood
- \* Variable size for different table lengths
- \* Steel gear rail with steel gear wheel

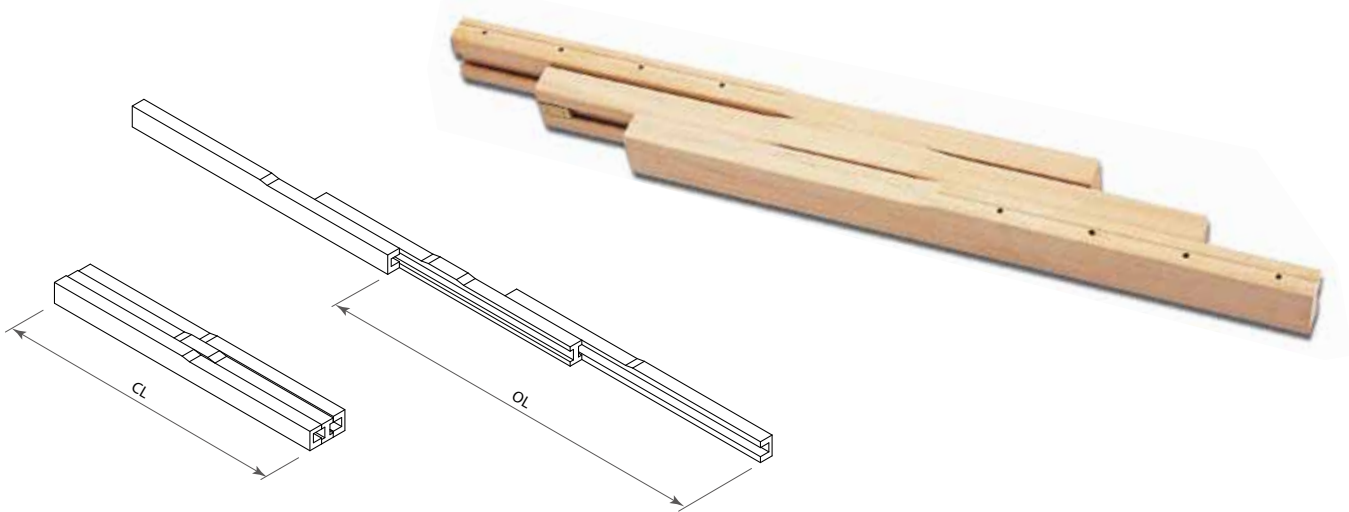


Item No.	Close length (CL)	Open length (OL)
6010-18	18" (457mm)	15" ~ 17" (380 ~ 430mm)
6010-24	24" (608mm)	15" ~ 23" (380 ~ 585mm)
6010-29	29" (737mm)	15" ~ 28" (380 ~ 710mm)
6010-36	36" (910mm)	15" ~ 35" (380 ~ 890mm)
6010-41	41.5" (1,055mm)	15" ~ 40" (380 ~ 1,020mm)
6010-47	47" (1,194mm)	15" ~ 46" (380 ~ 1,170mm)
6010-54	54" (1,371mm)	15" ~ 53" (380 ~ 1,345mm)



## 6011 Wooden Table Slide - Without Gear

- \* Natural wood: red or white wood
- \* Variable size for different table lengths



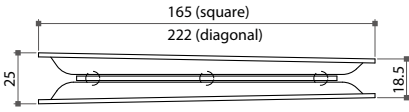
Item No.	Close length (CL)	Open length (OL)
6011-18	18" (457mm)	15" ~ 19" (380 ~ 480mm)
6011-24	24" (608mm)	15" ~ 27" (380 ~ 685mm)
6011-29	29" (737mm)	15" ~ 37" (380 ~ 940mm)
6011-36	36" (910mm)	15" ~ 43" (380 ~ 1,090mm)
6011-41	41.5" (1,055mm)	15" ~ 47" (380 ~ 1,190mm)
6011-47	47" (1,194mm)	15" ~ 50" (380 ~ 1,270mm)
6011-54	54" (1,371mm)	15" ~ 60" (380 ~ 1,520mm)



# 10-3 Table Swivels

## 54121 Turntable 360°, oblique

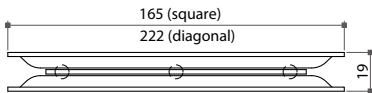
- \* Wrought steel in black
- \* Ball bearing swivel (360°), 100 kgs loading capacity



Item No.	Size (LxH)
54121	165(square)x18.5mm

## 54122 Turntable 360°, parallel

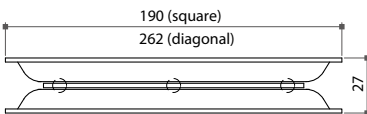
- \* Wrought steel in black
- \* Ball bearing swivel (360°), 100 kgs loading capacity



Item No.	Size (LxH)
54122	165(square)x19mm

## 54123 Turntable 180°, parallel

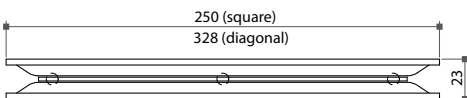
- \* Wrought steel in black
- \* Ball bearing swivel (180°), 100 kgs loading capacity



Item No.	Size (LxH)
54123	190(square)x27mm

## 54124 Turntable 360°, parallel

- \* Wrought steel in black
- \* Ball bearing swivel (360°), 150 kgs loading capacity

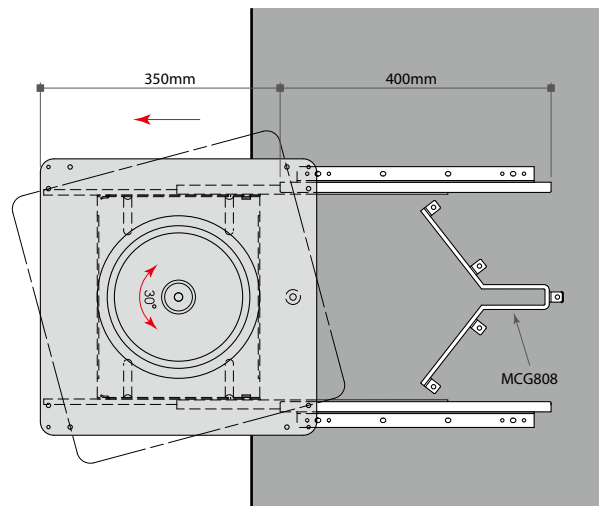
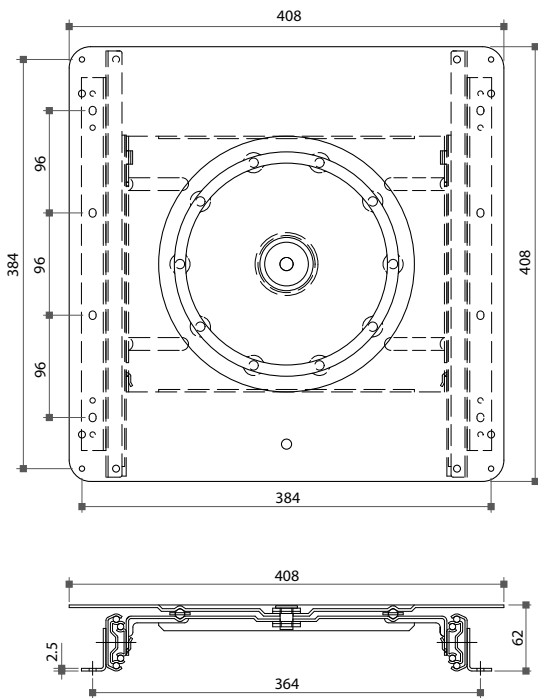


Item No.	Size (LxH)
54124	250(square)x23mm

# 10-3 Table Swivels

## 54808 Heavy Duty Pull-out Swivel

- \* 100 kgs (225 lbs) loading capacity
- \* Steel platform size: 408x408mm, to be mounted on cabinet and shelf unit
- \* Heavy duty full extension ball bearing slide length 400mm, travel (pull-out) 350mm
- \* With wire guider (**MCG808**) to be positioned in the center
- \* All steel in black



Item No.	Size (LxH)
54808	408 (square)x62mm

# 10-3 Table Swivels

## Round Lazy Susan Swivel

\* Galvanized steel with ball bearings



54888



54880

Item No.	Size	Height (H)	Loading capacity
54888	200mm (8")	9mm	200 kgs
54880	300mm (12")	9mm	300 kgs

## Square Lazy Susan Swivel

\* Galvanized steel with ball bearings



54830



54860

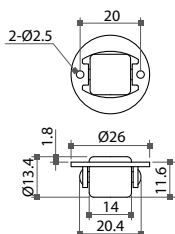
Item No.	Size	Height (H)	Loading capacity
54830	75mm (3")	9mm	50 kgs
54840	100mm (4")	9mm	70 kgs
54860	150mm (6")	9mm	150 kgs

## Roller Castors

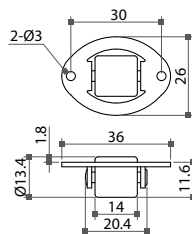
\* Material: steel with plastic



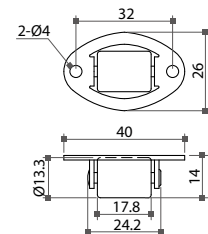
52801



52803



52804

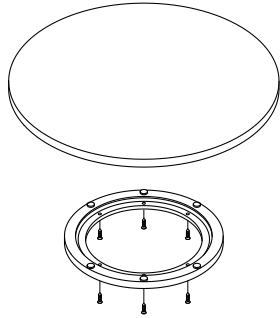


# 10-3 Table Swivels

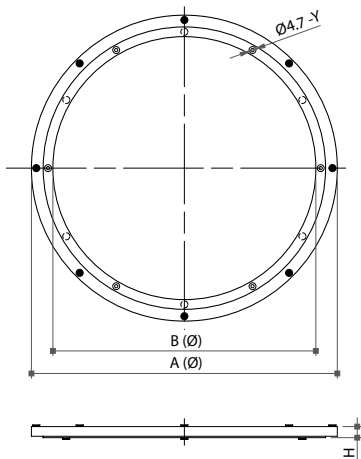
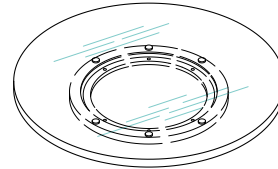
## Aluminum Ball Bearing Swivel

- \* Made of hardened aluminium alloy and steel ball bearing
- \* Smooth and silent rotation
- \* Ideal for dining disc top, display stands (shop fixtures), entertainment center and workplaces
- \* 360° rotation or 180° rotation with stoppers

\* For wooden tops - screw fixing



\* For glass tops - joined by suckers



### Groove type



Item No.	Outer dia. (A)	Inner dia. (B)	Height (H)	Hole (Y)	Maximum loading
54230	Ø230mm	Ø166mm	12mm	4 holes	50 kgs
54300	Ø325mm	Ø265mm	12mm	6 holes	80 kgs

\* The height (H) does not include the bumper height

### Flat surface type



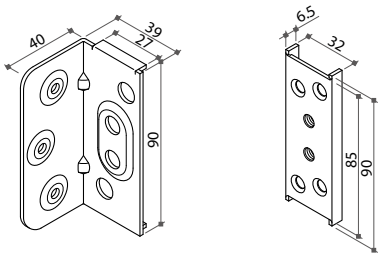
Item No.	Outer dia. (A)	Inner dia. (B)	Height (H)	Hole (Y)	Maximum loading
54320	Ø305mm	Ø248mm	12mm	3 holes	120 kgs
54400	Ø403mm	Ø342mm	12mm	5 holes	125 kgs
54450	Ø442mm	Ø380mm	14mm	6 holes	125 kgs
54600	Ø600mm	Ø520mm	16mm	4 holes	300 kgs
54750	Ø750mm	Ø670mm	16mm	5 holes	450 kgs

\* The height (H) does not include the bumper height

# 10-4 Bed Fittings

## 62387 Screw-On Bed Fittings Set

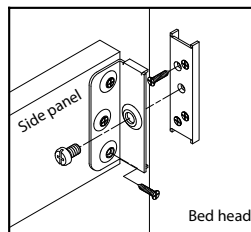
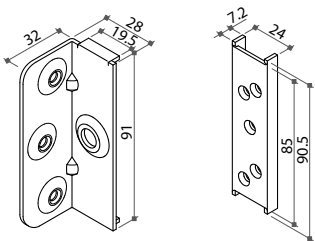
- \* Material: steel
- \* Thickness: 2mm
- \* Each set consist of 4 pairs of brackets and screws
- \* Finish: zinc plated



Item No.	Thickness
62387	2mm

## 62518 Screw-On Bed Fittings Set

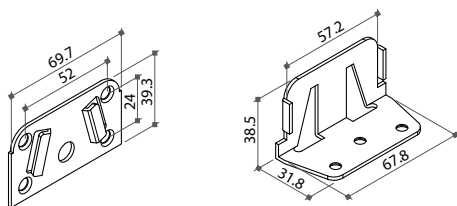
- \* Material: steel
- \* Thickness: 2mm
- \* Each set consist of 4 pairs of brackets and screws
- \* Finish: zinc plated



Item No.	Thickness
62518	2mm

## 62530 Double Bed Fittings

- \* Material: steel
- \* Thickness: 1.8mm
- \* Each set consist of 1 pair of brackets and screws
- \* Finish: yellow zinc plated

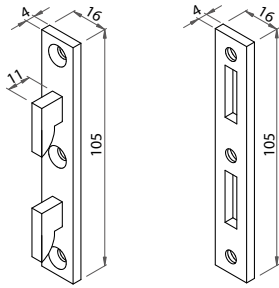


Item No.	Thickness
62530	1.8mm

# 10-4 Bed Fittings

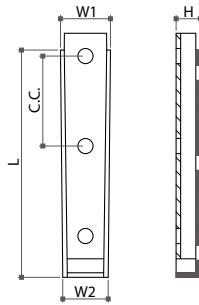
## 62500 Bed Fittings

- \* Material: steel
- \* Thickness: 4mm
- \* Each set consist of 4 pairs of brackets and screws for corners
- \* Finish: zinc plated



## Tapered Slot-in Connector

- \* Material: steel
- \* Finish: zinc plated or black coated



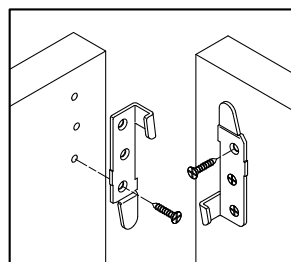
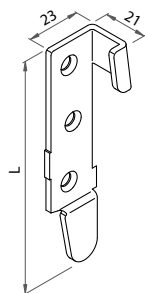
10 Table & Bed Fittings

unit: mm

Item No.	W1	W2	L	H	C.C.
22330	16.5	14.5	75	8	32
22331	14	13	53	7.6	29
22332	17	15	75	8	25
22333	15	13	101	8	37
22334	13	12	35	8	15
22336	29	24.5	101	16	25.4

## Bed Connecting Bracket

- \* Material: steel
- \* Finish: zinc plated
- \* Screw fixing hook-in fastening

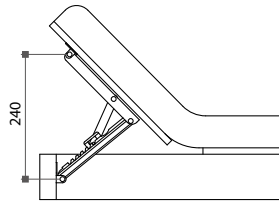
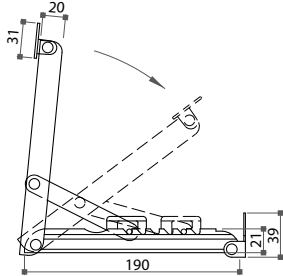


Item No.	Length (L)
62521	95mm
62522	145mm

# 10-4 Bed Fittings

## 57419 Scissors Jack

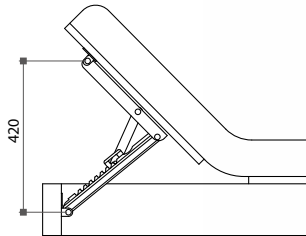
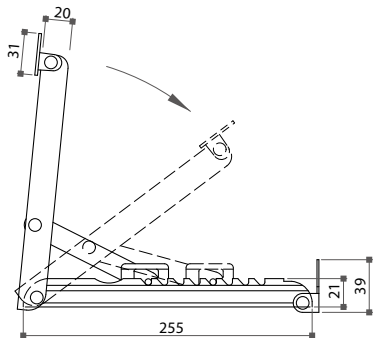
- \* Raising height: max. 240mm by 6 positions
- \* Material: steel
- \* Complete with mounting brackets
- \* Finish: yellow zinc or blue zinc



Item No.	Raising height
57419	max. 240mm

## 57420 Scissors Jack

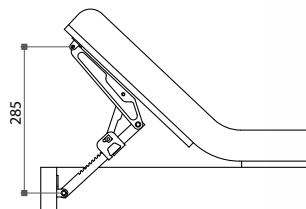
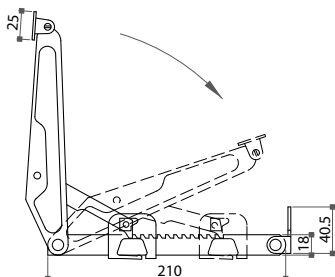
- \* Raising height: max. 420mm by 8 positions
- \* Material: steel
- \* Complete with mounting brackets
- \* Finish: yellow zinc or blue zinc



Item No.	Raising height
57420	max. 420mm

## 57430 Scissors Jack

- \* Raising height: max. 285mm by 12 positions
- \* Material: steel
- \* Complete with mounting brackets
- \* Finish: yellow zinc or blue zinc



Item No.	Raising height
57430	max. 285mm

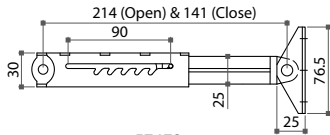
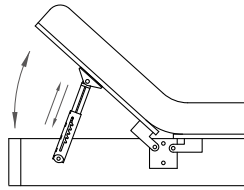
# 10-4 Bed Fittings

## Telescopic Ratchet Fitting

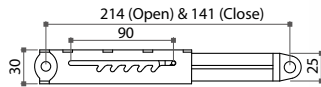
**57473** With mounting bracket

**57475** Side mounting

- \* Material: steel
- \* Ratchet adjustment: 5 positions of bed-head raising
- \* Finish: yellow zinc plated or black coated



57473

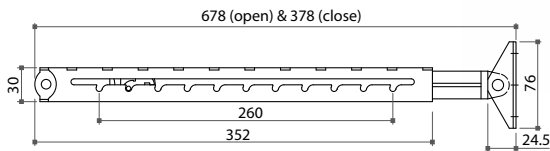


57475

Item No.	Feature
57473	with mounting bracket
57475	side mounting

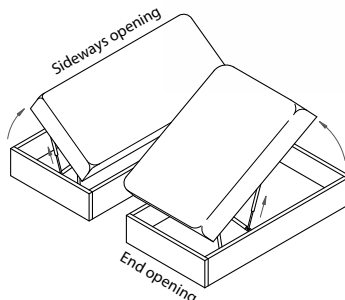
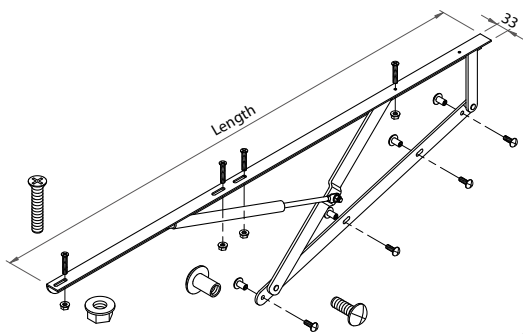
## 57578 Telescopic Ratchet Fitting

- \* Material: steel
- \* Ratchet adjustment: 10 positions of bed-head raising
- \* Finish: yellow zinc plated

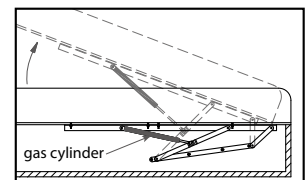


## Gas-Lifting Bed Mechanism

- \* Material: steel
- \* With gas cylinder, left & right hand available
- \* Finish: black



Item No.	Length	Spring force	Opening
22401	915mm	65 or 75 kgs	sideway
22400	1,220mm	75 or 85 kgs	sideway
22402	1,525mm	95 or 105 kgs	end





**Алматы** (7273)495-231  
**Ангарск** (3955)60-70-56  
**Архангельск** (8182)63-90-72  
**Астрахань** (8512)99-46-04  
**Барнаул** (3852)73-04-60  
**Белгород** (4722)40-23-64  
**Благовещенск** (4162)22-76-07  
**Брянск** (4832)59-03-52  
**Владивосток** (423)249-28-31  
**Владикавказ** (8672)28-90-48  
**Владимир** (4922)49-43-18  
**Волгоград** (844)278-03-48  
**Вологда** (8172)26-41-59  
**Воронеж** (473)204-51-73  
**Екатеринбург** (343)384-55-89

**Иваново** (4932)77-34-06  
**Ижевск** (3412)26-03-58  
**Иркутск** (395)279-98-46  
**Казань** (843)206-01-48  
**Калининград** (4012)72-03-81  
**Калуга** (4842)92-23-67  
**Кемерово** (3842)65-04-62  
**Киров** (8332)68-02-04  
**Коломна** (4966)23-41-49  
**Кострома** (4942)77-07-48  
**Краснодар** (861)203-40-90  
**Красноярск** (391)204-63-61  
**Курск** (4712)77-13-04  
**Курган** (3522)50-90-47  
**Липецк** (4742)52-20-81

**Магнитогорск** (3519)55-03-13  
**Москва** (495)268-04-70  
**Мурманск** (8152)59-64-93  
**Набережные Челны** (8552)20-53-41  
**Нижний Новгород** (831)429-08-12  
**Новокузнецк** (3843)20-46-81  
**Ноябрьск** (3496)41-32-12  
**Новосибирск** (383)227-86-73  
**Омск** (3812)21-46-40  
**Орел** (4862)44-53-42  
**Оренбург** (3532)37-68-04  
**Пенза** (8412)22-31-16  
**Петрозаводск** (8142)55-98-37  
**Псков** (8112)59-10-37

**Пермь** (342)205-81-47  
**Ростов-на-Дону** (863)308-18-15  
**Рязань** (4912)46-61-64  
**Самара** (846)206-03-16  
**Саранск** (8342)22-96-24  
**Санкт-Петербург** (812)309-46-40  
**Саратов** (845)249-38-78  
**Севастополь** (8692)22-31-93  
**Симферополь** (3652)67-13-56  
**Смоленск** (4812)29-41-54  
**Сочи** (862)225-72-31  
**Ставрополь** (8652)20-65-13  
**Сургут** (3462)77-98-35  
**Сыктывкар** (8212)25-95-17  
**Тамбов** (4752)50-40-97

**Тверь** (4822)63-31-35  
**Тольятти** (8482)63-91-07  
**Томск** (3822)98-41-53  
**Тула** (4872)33-79-87  
**Тюмень** (3452)66-21-18  
**Ульяновск** (8422)24-23-59  
**Улан-Удэ** (3012)59-97-51  
**Уфа** (347)229-48-12  
**Хабаровск** (4212)92-98-04  
**Чебоксары** (8352)28-53-07  
**Челябинск** (351)202-03-61  
**Череповец** (8202)49-02-64  
**Чита** (3022)38-34-83  
**Якутск** (4112)23-90-97  
**Ярославль** (4852)69-52-93

Россия +7(495)268-04-70

Казахстан +7(7172)727-132

Киргизия +996(312)96-26-47

[www.fourwinds.nt-rt.ru](http://www.fourwinds.nt-rt.ru) | | [fse@nt-rt.ru](mailto:fse@nt-rt.ru)