

Алматы (7273)495-231	Иваново (4932)77-34-06	Магнитогорск (3519)55-03-13	Пермь (342)205-81-47	Тверь (4822)63-31-35
Ангарск (3955)60-70-56	Ижевск (3412)26-03-58	Москва (495)268-04-70	Ростов-на-Дону (863)308-18-15	Тольятти (8482)63-91-07
Архангельск (8182)63-90-72	Иркутск (395)279-98-46	Мурманск (8152)59-64-93	Рязань (4912)46-61-64	Томск (3822)98-41-53
Астрахань (8512)99-46-04	Казань (843)206-01-48	Набережные Челны (8552)20-53-41	Самара (846)206-03-16	Тула (4872)33-79-87
Барнаул (3852)73-04-60	Калининград (4012)72-03-81	Нижний Новгород (831)429-08-12	Саранск (8342)22-96-24	Тюмень (3452)66-21-18
Белгород (4722)40-23-64	Калуга (4842)92-23-67	Новокузнецк (3843)20-46-81	Санкт-Петербург (812)309-46-40	Ульяновск (8422)24-23-59
Благовещенск (4162)22-76-07	Кемерово (3842)65-04-62	Ноябрьск (3496)41-32-12	Саратов (845)249-38-78	Улан-Удэ (3012)59-97-51
Брянск (4832)59-03-52	Киров (8332)68-02-04	Новосибирск (383)227-86-73	Севастополь (8692)22-31-93	Уфа (347)229-48-12
Владивосток (423)249-28-31	Коломна (4966)23-41-49	Омск (3812)21-46-40	Симферополь (3652)67-13-56	Хабаровск (4212)92-98-04
Владикавказ (8672)28-90-48	Кострома (4942)77-07-48	Орел (4862)44-53-42	Смоленск (4812)29-41-54	Чебоксары (8352)28-53-07
Владимир (4922)49-43-18	Краснодар (861)203-40-90	Оренбург (3532)37-68-04	Сочи (862)225-72-31	Челябинск (351)202-03-61
Волгоград (844)278-03-48	Красноярск (391)204-63-61	Пенза (8412)22-31-16	Ставрополь (8652)20-65-13	Череповец (8202)49-02-64
Вологда (8172)26-41-59	Курск (4712)77-13-04	Петрозаводск (8142)55-98-37	Сургут (3462)77-98-35	Чита (3022)38-34-83
Воронеж (473)204-51-73	Курган (3522)50-90-47	Псков (8112)59-10-37	Сыктывкар (8212)25-95-17	Якутск (4112)23-90-97
Екатеринбург (343)384-55-89	Липецк (4742)52-20-81		Тамбов (4752)50-40-97	Ярославль (4852)69-52-93

Россия +7(495)268-04-70

Казахстан +7(7172)727-132

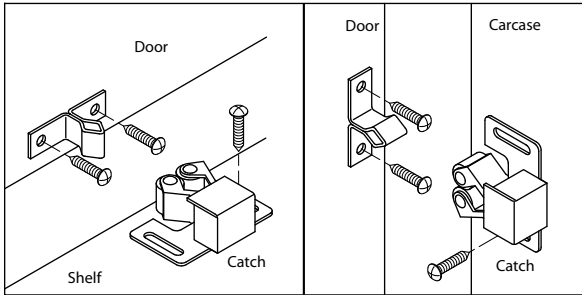
Киргизия +996(312)96-26-47

www.fourwinds.nt-rt.ru | | fse@nt-rt.ru

Технические характеристики на мебельные защелки, задвижки, фиксаторы, шпингалеты компании **Four Winds**

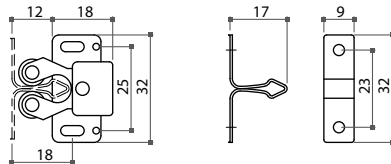
Виды товаров: роликовые защелки, защелки и замки, задвижки мебельные, магнитные защелки, шпингалеты, двойные роликовые захваты, пластиковые фрикционные защелки, пластиковые роликовые фиксаторы, двойные роликовые фиксаторы, твердые латунные защелки, цилиндрические магнитные защелки, плоские магнитные защелки, плоские магнитные защелки, квадратные магнитные защелки, нажимные магнитные защелки, одинарные и двойные магнитные защелки и др.

06-1 Roller & Bullet Catches



55010 Double Roller Catch

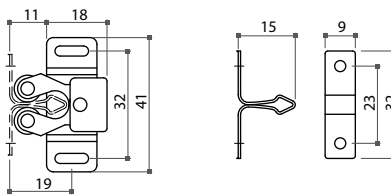
- * 25mm C.C.
- * With diamond strike
- * Finish: zinc or antique copper plated



Item No.	C.C.
55010	25mm

55031 Double Roller Catch

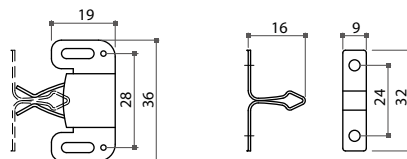
- * 32mm C.C.
- * With diamond strike
- * Finish: zinc or antique copper plated
- * Hi-Rise type



Item No.	C.C.
55031	32mm

55020 Friction Catch

- * 28mm C.C.
- * With diamond strike
- * Finish: zinc plated

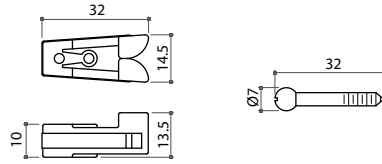


Item No.	C.C.
55020	28mm

06-1 Roller & Bullet Catches

55100 Plastic Friction Catch

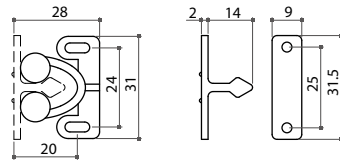
- * 9mm C.C.
- * With screw strike
- * Color: white, brown / nickel



Item No.	C.C.
55100	9mm

55090 Plastic Roller Catch

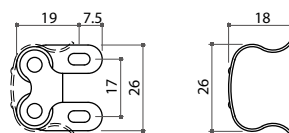
- * 24mm C.C.
- * With plastic diamond strike
- * Color: white or brown



Item No.	C.C.
55090	24mm

55210 Double Roller Catch

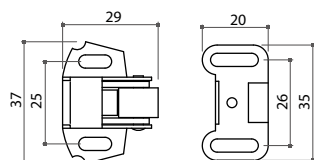
- * 17mm C.C.
- * With spring strike
- * Finish: zinc plated



Item No.	C.C.
55210	17mm

55265 Single Roller Catch

- * 25mm C.C.
- * With strike
- * Finish: antique copper, zinc or brass plated

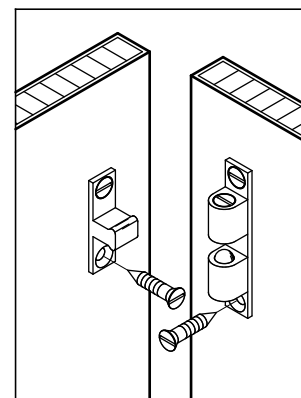
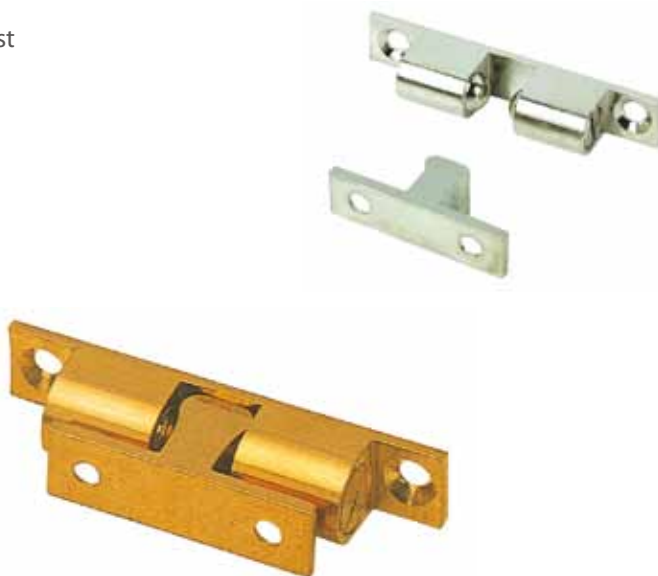
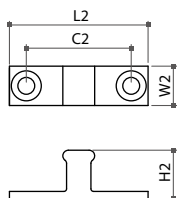
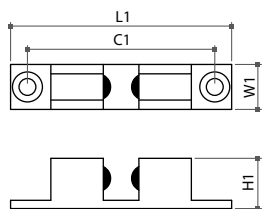


Item No.	C.C.
55265	25mm

06-1 Roller & Bullet Catches

Solid Brass Double Bead Catch

- * Finish: original color or nickel plated
- * Stainless steel bead and spring are available on request

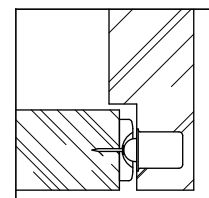
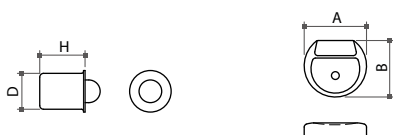


unit: mm

Item No.	L1	H1	W1	C1	L2	H2	W2	C2
55331	43.9	9.2	7.7	35	26	9	7.7	18
55332	48.6	10.6	8.9	39.8	29	11.3	7.6	19.6
55334	59.7	13.1	11.1	50	37	13.5	8.8	24
55335	68.7	15	13	58.3	42	15.8	12	30

Bullet Catch

- * With strike and nail
- * Finish: brass or nickel plated



Item No.	Size (DxH)	Strike (AxB)
55380	7x9mm	12.5x11.5mm
55381	8x11mm	16.5x14.5mm
55382	9.5x11mm	16.5x14.5mm

06-1 Roller & Bullet Catches

Solid Brass Ball Catch

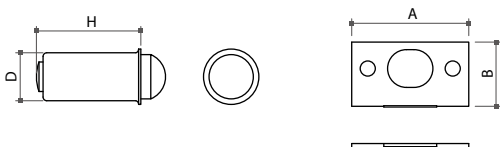
- * With strike
- * Finish: original color



Item No.	Size (DxH)	Strike (AxB)
55371	9.5x10.5mm	21x12mm
55372	11x12mm	23.5x14mm
55373	15x16mm	32.7x16.7mm
55374	18x19mm	38x20.8mm

Solid Brass Bullet Catch

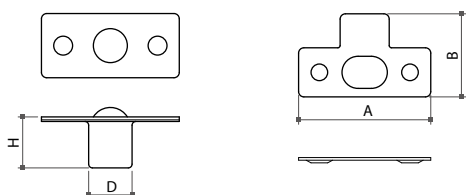
- * With strike
- * Finish: original color



Item No.	Size (DxH)	Strike (AxB)
55375	9.5x16mm	27.5x15mm
55376	12.7x28.6mm	31x17mm

Steel Ball Catch

- * With strike
- * Finish: brass plated

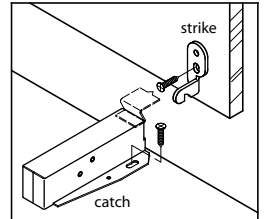
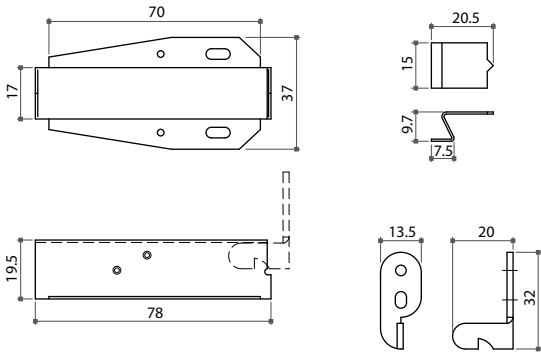


Item No.	Size (DxH)	Strike (AxB)
55250	16x13.5mm	35x22mm
55251	19x18mm	38x26mm
55252	12.7x20.5mm	53x32mm

06-2 Latches & Case Locks

55600 Cabinet Touch Latch

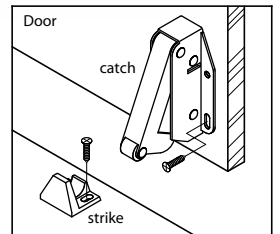
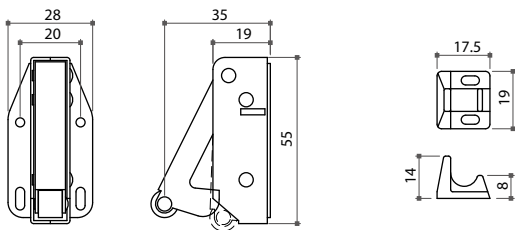
- * With strike
- * Finish: antique copper or zinc plated



Item No.	Size
55600	37x70mm

55650 Tip Latch

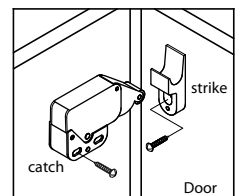
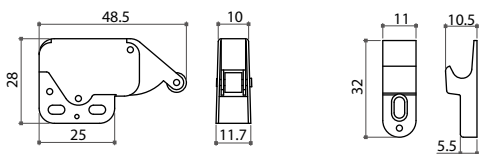
- * With nylon strike
- * Finish: zinc / white



Item No.	Size
55650	28x55mm

55690 Mini Latch

- * Steel housing, nickel or brass plated
- * With nylon strike in white or brown

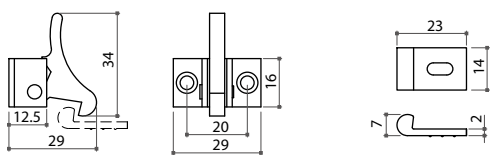


Item No.	Size
55690	28x48.5mm

06-2 Latches & Case Locks

55401 Solid Brass Elbow Catch

- * With strike
- * Finish: original color, nickel or chrome plated

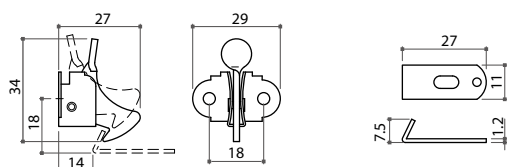


Item No.	C.C.
55401	20mm

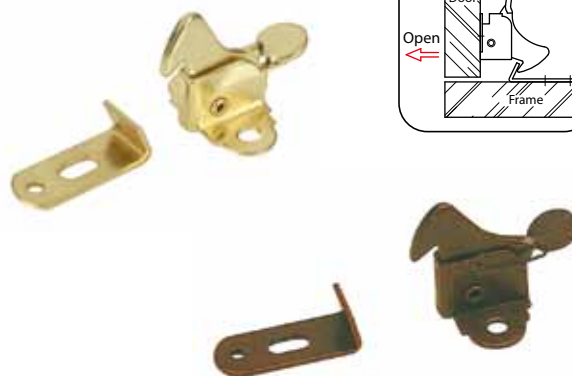
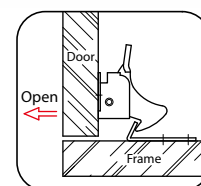


55400 Elbow Catch

- * With strike
- * Finish: antique copper, brass, zinc or nickel plated

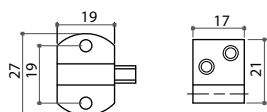


Item No.	C.C.
55400	18mm



55601 Spring Catch

- * 19mm C.C.
- * With strike
- * Catch: 0.7mm steel
- * Strike: 1.2mm steel
- * Finish: antique English or antique copper plated

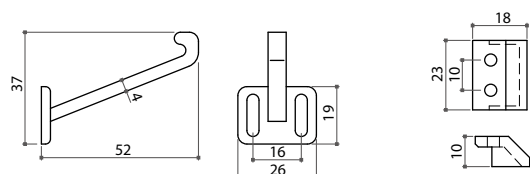


Item No.	C.C.
55601	19mm

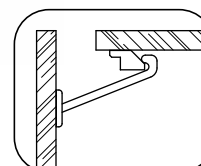


55040 Child Proof Safety Latch

- * Material: plastic
- * With strike
- * Color: white



Item No.	C.C.
55040	16mm

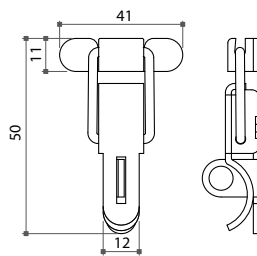


06-2 Latches & Case Locks



63870 Avion Latch

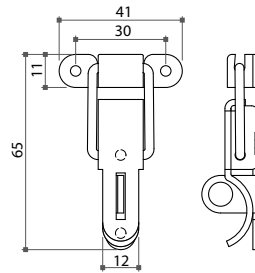
- * Material: steel
- * With striker
- * Finish: lacquered, zinc or brass plated



Item No.	Material
63870	steel

Avion Latch

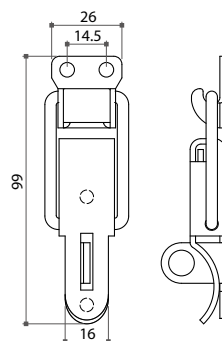
- * With striker
- 63871**
- * Steel, zinc or nickel plated
- 63876**
- * Stainless steel, original color



Item No.	Material
63871	steel
63876	stainless steel

Heavy Duty Case Lock

- * With striker
- 63872**
- * Steel, zinc or nickel plated
- 63877**
- * Stainless steel, original color



Item No.	Material
63872	steel
63877	stainless steel

06-2 Latches & Case Locks

Heavy Duty Case Lock

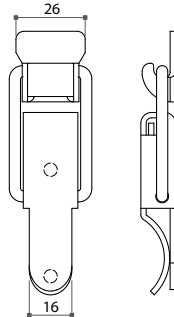
* With striker

63873

* Steel, zinc or nickel plated

63878

* Stainless steel, original color



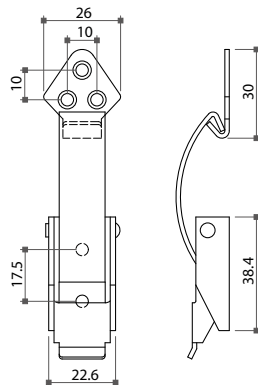
Item No.	Material
63873	steel
63878	stainless steel

63879 Case Lock

* Material: steel

* With striker

* Finish: nickel, black antique or brass plated



Item No.	Material
63879	steel

Steel Case Lock

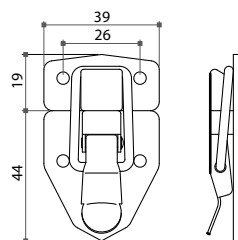
* Finish: nickel or brass plated

63890

* With 2-hole striker

63891

* With 3-hole striker

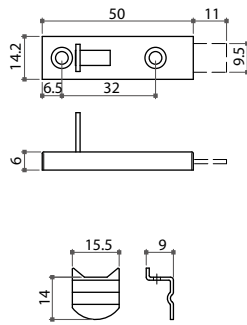


Item No.	Feature
63890	with 2-holes striker
63891	with 3-holes striker

06-2 Latches & Case Locks

61370 Cabinet Bolt Latch

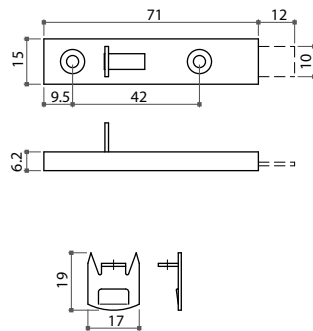
- * Material: steel
- * With strike
- * 31mm C.C.
- * Size: 50mm L.
- * Finish: nickel plated



Item No.	C.C.
61370	31mm

61380 Cabinet Bolt Latch

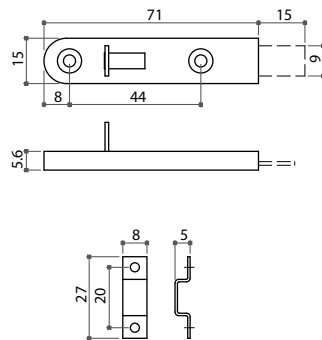
- * With strike
- * 42mm C.C.
- * Size: 71mm L.
- * Finish: nickel or brass plated



Item No.	C.C.
61380	42mm

61381 Cabinet Bolt Latch

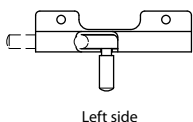
- * With strike
- * 44mm C.C.
- * Size: 71mm L.
- * Finish: nickel or brass plated



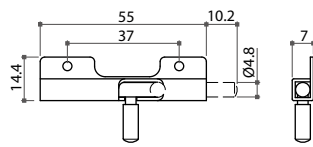
Item No.	C.C.
61381	44mm

61100 Furniture Slide Bolt Spring-Slide Type

- * Material: steel
- * 1.0mm thickness
- * Available with left or right side
- * Finish: nickel plated



Left side



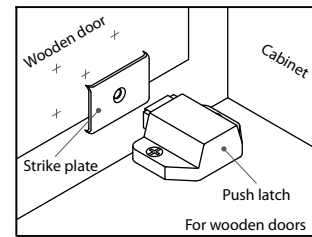
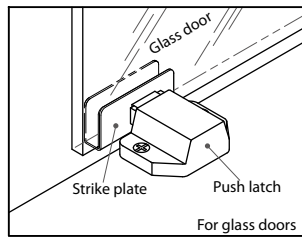
Right side



Item No.	C.C.
61100	37mm

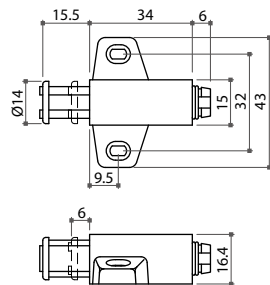
06-3 Magnetic Push Latches

Magnetic push latch catches the door with magnetic force
 Push-to-open for wooden or glass door



50710 Cylinder Magnetic Push Latch

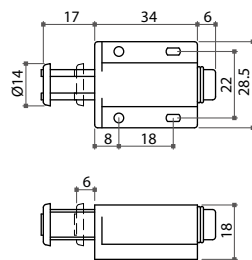
- * Material: plastic
- * Color: black, brown or white
- * 32mm C.C.
- * Single type



Item No.	C.C.
50710	32mm

50703 Cylinder Magnetic Push Latch

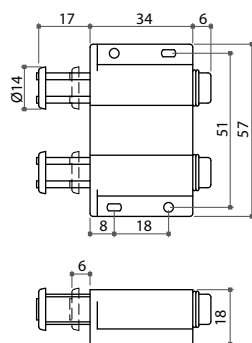
- * Material: plastic
- * Color: black, brown or white
- * 32mm C.C.
- * Single type



Item No.	C.C.
50703	32mm

50723 Cylinder Magnetic Push Latch

- * Material: plastic
- * Color: black, brown or white
- * 51mm C.C.
- * Double type

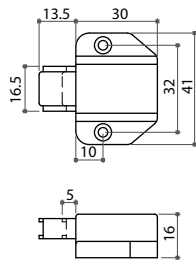


Item No.	C.C.
50723	51mm

06-3 Magnetic Push Latches

50783 Flat Magnetic Push Latch

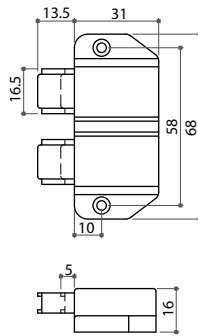
- * Material: plastic
- * Color: black, brown or white
- * 32mm C.C.
- * Single type



Item No.	C.C.
50783	32mm

50770 Flat Magnetic Push Latch

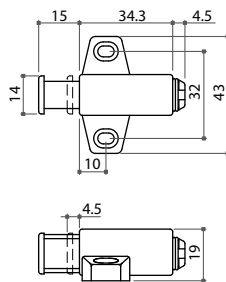
- * Material: plastic
- * Color: black, brown or white
- * 58mm C.C.
- * Double type



Item No.	C.C.
50770	58mm

50960 Square Magnetic Push Latch

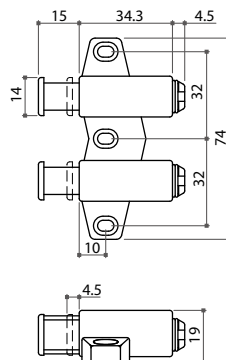
- * Material: plastic
- * Color: black, brown or white
- * 32mm C.C.
- * Single type



Item No.	C.C.
50960	32mm

50980 Square Magnetic Push Latch

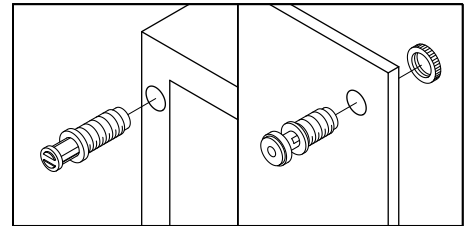
- * Material: plastic
- * Color: black, brown or white
- * 64mm C.C.
- * Double type



Item No.	C.C.
50980	64mm

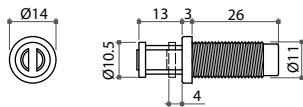
06-3 Magnetic Push Latches

Drill-in type magnetic push latch is a push-to-open solution for non-knob cabinet
Flexible mounting method on side, front or bottom panel



50880 Drill-In Type Magnetic Push Latch

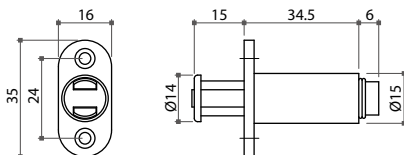
- * Material: plastic
- * Color: black
- * 11mm hole drilling



Item No.	Drilling hole
50880	11mm

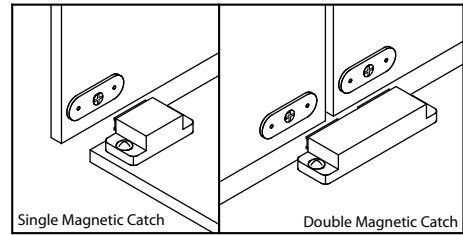
50850 Drill-In Type Magnetic Push Latch

- * Material: plastic
- * Color: black, brown or white
- * 24mm C.C.
- * 15mm drilling hole
- * Mortise type



Item No.	C.C.	Drilling hole
50850	24mm	15mm

06-4 Magnetic Catches

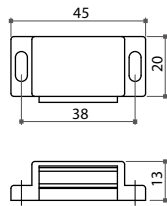


Single Magnetic Catch

50630 3 kgs holding power

50631 6 kgs holding power

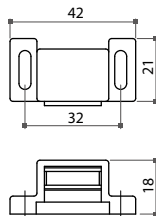
- * Material: plastic
- * Color: black, brown or white
- * 38mm C.C.
- * With strike plate



Item No.	C.C.	Holding power
50630	38mm	3 kgs
50631	38mm	6 kgs

50650 Hi-Rise Single Magnetic Catch

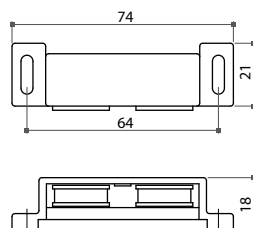
- * Material: plastic
- * Color: black, brown or white
- * High boy, 32mm C.C.



Item No.	C.C.
50650	32mm

50660 Hi-Rise Double Magnetic Catch

- * Material: plastic
- * Color: black, brown or white
- * High boy, 64mm C.C.

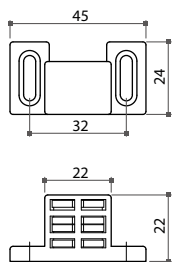


Item No.	C.C.
50660	64mm

06-4 Magnetic Catches

50350 Heavy Duty Magnetic Catch

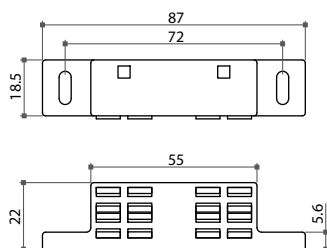
- * Material: plastic
- * Color: brown or white
- * 32mm C.C.
- * With anisotropic magnet
- * 7 kgs holding power



Item No.	C.C.
50350	32mm

50340 Heavy Duty Magnetic Catch

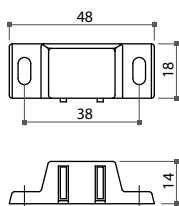
- * For double shutter application
- * Finish: white / zinc plated
- * 72mm C.C.



Item No.	C.C.
50340	72mm

50683 Heavy Duty Magnetic Catch

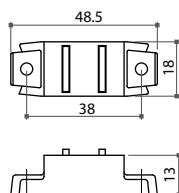
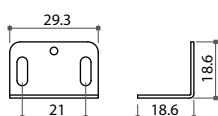
- * Material: plastic
- * Color: black, brown or white
- * 38mm C.C.
- * With anisotropic magnet



Item No.	C.C.
50683	38mm

50680 Magnetic Catch

- * Material: plastic
- * Color: tan or white
- * 38mm C.C.
- * With strike plate, antique copper plated

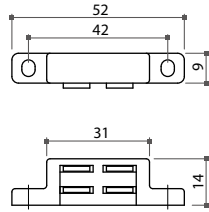


Item No.	C.C.
50680	38mm

06-4 Magnetic Catches

50651 Single Magnetic Catch

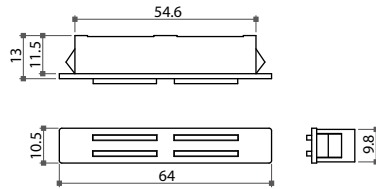
- * Material: plastic
- * Color: brown or white
- * 40mm C.C.



Item No.	C.C.
50651	40mm

50542 Snap-In Magnetic Catch

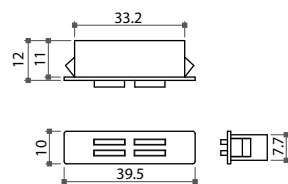
- * With anisotropic ferrite magnet
- * Finish: white / zinc plated



Item No.	Feature
50542	snap-in

50543 Snap-In Magnetic Catch

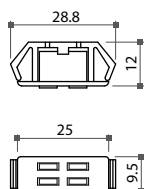
- * With anisotropic ferrite magnet
- * Finish: white / zinc plated



Item No.	Feature
50543	snap-in

50540 Snap-In Magnetic Catch

- * Plastic housing in white
- * Metal insert plate, zinc plated

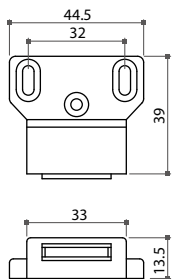


Item No.	Feature
50540	snap-in

06-4 Magnetic Catches

50670 Magnetic Catch

- * Material: plastic
- * Color: brown or white
- * 32mm C.C.

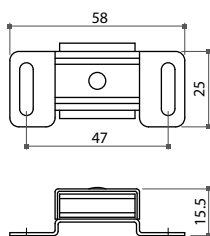


Item No.	C.C.
50670	32mm



50450 Aluminium Case Magnetic Catch

- * Aluminium housing
- * 47mm C.C.
- * Wood grain or original color

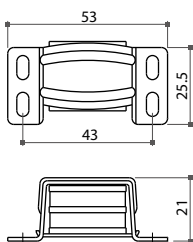


Item No.	C.C.
50450	47mm



50460 Aluminium Case Magnetic Catch

- * Aluminium housing
- * 43mm C.C.
- * Wood grain or original color

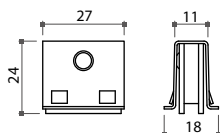


Item No.	C.C.
50460	43mm

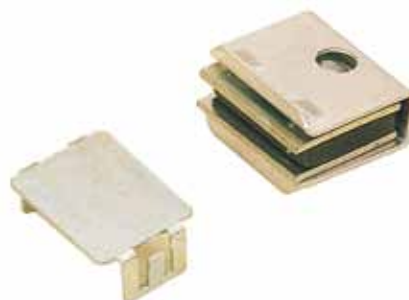


50420 Aluminium Case Magnetic Catch

- * Aluminium housing
- * With strike plate, zinc plated
- * Wood grain or original color



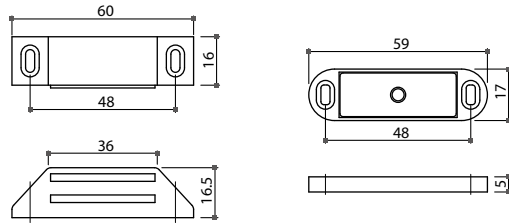
Item No.	Accessory
50420	with strike plate



06-4 Magnetic Catches

50570 Heavy Duty Magnetic Catch

- * Material: plastic
- * Color: brown or white
- * 48mm C.C.
- * With strike plate



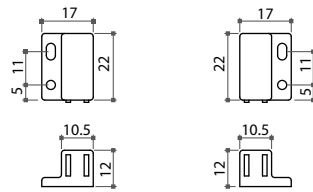
Item No.	C.C.
50570	48mm

Magnetic Catch

50861 Right type

50862 Left type

- * Plastic housing
- * Color: black or brown
- * 11mm C.C.



Right type

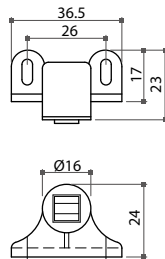
Left type



Item No.	C.C.	Feature
50861	11mm	right type
50862	11mm	left type

50561 Single Magnetic Catch

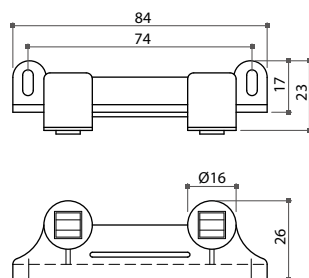
- * Material: plastic
- * Color: brown or white
- * 26mm C.C.
- * With strike plate



Item No.	C.C.
50561	26mm

50562 Double Magnetic Catch

- * Material: plastic
- * Color: brown or white
- * 74mm C.C.
- * With two strike plates

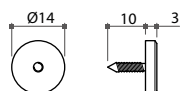
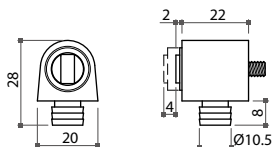


Item No.	C.C.
50562	74mm

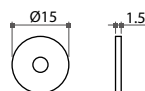
06-4 Magnetic Catches

Press-In Magnetic Catch

- 50550** With isotropic magnet, 1 kg holding power
- 50550-1** With isotropic magnet, 2 kgs holding power
- * Plastic housing in brown or white color
- * With **50552** nail strike or **50010** round strike



50552



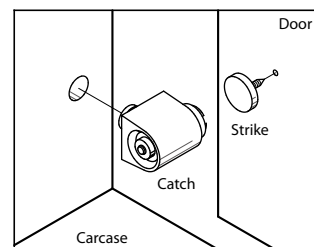
50010

Item No.	Holding power
50550	1 kg
50550-1	2 kgs



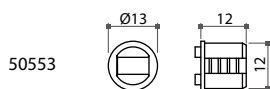
50552

50010

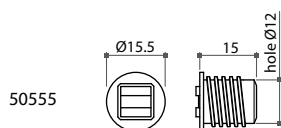


Press-In Magnetic Catch

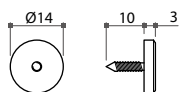
- 50553** Ø12x12mm
- 50555** Ø12x15mm
- * Plastic housing in brown or white color
- * With **50552** nail strike or **50010** round strike



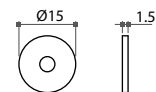
50553



50555



50552



50010

Item No.	Size
50553	Ø12x12mm
50555	Ø12x15mm

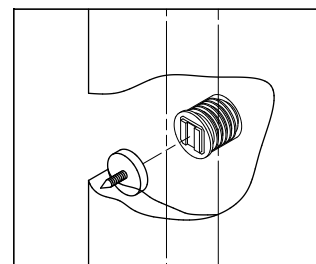


50553

50555

50552

50010



Алматы (7273)495-231
Ангарск (3955)60-70-56
Архангельск (8182)63-90-72
Астрахань (8512)99-46-04
Барнаул (3852)73-04-60
Белгород (4722)40-23-64
Благовещенск (4162)22-76-07
Брянск (4832)59-03-52
Владивосток (423)249-28-31
Владикавказ (8672)28-90-48
Владимир (4922)49-43-18
Волгоград (844)278-03-48
Вологда (8172)26-41-59
Воронеж (473)204-51-73
Екатеринбург (343)384-55-89

Иваново (4932)77-34-06
Ижевск (3412)26-03-58
Иркутск (395)279-98-46
Казань (843)206-01-48
Калининград (4012)72-03-81
Калуга (4842)92-23-67
Кемерово (3842)65-04-62
Киров (8332)68-02-04
Коломна (4966)23-41-49
Кострома (4942)77-07-48
Краснодар (861)203-40-90
Красноярск (391)204-63-61
Курск (4712)77-13-04
Курган (3522)50-90-47
Липецк (4742)52-20-81

Магнитогорск (3519)55-03-13
Москва (495)268-04-70
Мурманск (8152)59-64-93
Набережные Челны (8552)20-53-41
Нижний Новгород (831)429-08-12
Новокузнецк (3843)20-46-81
Ноябрьск (3496)41-32-12
Новосибирск (383)227-86-73
Омск (3812)21-46-40
Орел (4862)44-53-42
Оренбург (3532)37-68-04
Пенза (8412)22-31-16
Петрозаводск (8142)55-98-37
Псков (8112)59-10-37

Пермь (342)205-81-47
Ростов-на-Дону (863)308-18-15
Рязань (4912)46-61-64
Самара (846)206-03-16
Саранск (8342)22-96-24
Санкт-Петербург (812)309-46-40
Саратов (845)249-38-78
Севастополь (8692)22-31-93
Симферополь (3652)67-13-56
Смоленск (4812)29-41-54
Сочи (862)225-72-31
Ставрополь (8652)20-65-13
Сургут (3462)77-98-35
Сыктывкар (8212)25-95-17
Тамбов (4752)50-40-97

Тверь (4822)63-31-35
Тольятти (8482)63-91-07
Томск (3822)98-41-53
Тула (4872)33-79-87
Тюмень (3452)66-21-18
Ульяновск (8422)24-23-59
Улан-Удэ (3012)59-97-51
Уфа (347)229-48-12
Хабаровск (4212)92-98-04
Чебоксары (8352)28-53-07
Челябинск (351)202-03-61
Череповец (8202)49-02-64
Чита (3022)38-34-83
Якутск (4112)23-90-97
Ярославль (4852)69-52-93

Россия +7(495)268-04-70

Казахстан +7(7172)727-132

Киргизия +996(312)96-26-47

www.fourwinds.nt-rt.ru | | fse@nt-rt.ru