

Алматы (7273)495-231  
Ангарск (3955)60-70-56  
Архангельск (8182)63-90-72  
Астрахань (8512)99-46-04  
Барнаул (3852)73-04-60  
Белгород (4722)40-23-64  
Благовещенск (4162)22-76-07  
Брянск (4832)59-03-52  
Владивосток (423)249-28-31  
Владикавказ (8672)28-90-48  
Владимир (4922)49-43-18  
Волгоград (844)278-03-48  
Вологда (8172)26-41-59  
Воронеж (473)204-51-73  
Екатеринбург (343)384-55-89

Иваново (4932)77-34-06  
Ижевск (3412)26-03-58  
Иркутск (395)279-98-46  
Казань (843)206-01-48  
Калининград (4012)72-03-81  
Калуга (4842)92-23-67  
Кемерово (3842)65-04-62  
Киров (8332)68-02-04  
Коломна (4966)23-41-49  
Кострома (4942)77-07-48  
Краснодар (861)203-40-90  
Красноярск (391)204-63-61  
Курск (4712)77-13-04  
Курган (3522)50-90-47  
Липецк (4742)52-20-81

Магнитогорск (3519)55-03-13  
Москва (495)268-04-70  
Мурманск (8152)59-64-93  
Набережные Челны (8552)20-53-41  
Нижний Новгород (831)429-08-12  
Новокузнецк (3843)20-46-81  
Ноябрьск (3496)41-32-12  
Новосибирск (383)227-86-73  
Омск (3812)21-46-40  
Орел (4862)44-53-42  
Оренбург (3532)37-68-04  
Пенза (8412)22-31-16  
Петрозаводск (8142)55-98-37  
Псков (8112)59-10-37

Пермь (342)205-81-47  
Ростов-на-Дону (863)308-18-15  
Рязань (4912)46-61-64  
Самара (846)206-03-16  
Саранск (8342)22-96-24  
Санкт-Петербург (812)309-46-40  
Саратов (845)249-38-78  
Севастополь (8692)22-31-93  
Симферополь (3652)67-13-56  
Смоленск (4812)29-41-54  
Сочи (862)225-72-31  
Ставрополь (8652)20-65-13  
Сургут (3462)77-98-35  
Сыктывкар (8212)25-95-17  
Тамбов (4752)50-40-97

Тверь (4822)63-31-35  
Тольятти (8482)63-91-07  
Томск (3822)98-41-53  
Тула (4872)33-79-87  
Тюмень (3452)66-21-18  
Ульяновск (8422)24-23-59  
Улан-Удэ (3012)59-97-51  
Уфа (347)229-48-12  
Хабаровск (4212)92-98-04  
Чебоксары (8352)28-53-07  
Челябинск (351)202-03-61  
Череповец (8202)49-02-64  
Чита (3022)38-34-83  
Якутск (4112)23-90-97  
Ярославль (4852)69-52-93

Россия +7(495)268-04-70

Казахстан +7(7172)727-132

Киргизия +996(312)96-26-47

[www.fourwinds.nt-rt.ru](http://www.fourwinds.nt-rt.ru) | [fse@nt-rt.ru](mailto:fse@nt-rt.ru)

# Технические характеристики на колесные ролики мебельные закрытые, незакрытые, медицинские, промышленные, прочие, аксессуары КОМПАНИИ **Four Winds**

**Виды товаров:** двойные, металлические двойные ролики, нейлоновые, медицинские, промышленные с фиксатором, прорезиненные, аксессуары, фитиновые системы, штоки, стержни, вставки, втулки, корпуса и др.

# 12-1 Unhooded Castors

## Solid-I Unhooded Twin Wheel Castors

- \* Hard wheel: all nylon
- \* Soft wheel: nylon wheel with PU tread
- \* Colors:
  - All black (BB)
  - Black wheel with silver gray beam and caps (SY2)
- \* Loading capacity: 50 kgs



Item No.	Type	wheel	Dia.	W	H	Static Loading capacity
STW50	non-brake	hard wheel	Ø50mm	51.5mm	51mm	50 kgs / per castor
STW501	brake	hard wheel				
STW50U	non-brake	soft wheel	Ø55mm	55.8mm	58.8mm	50 kgs / per castor
STW501U	brake	soft wheel				
STW55	non-brake	hard wheel	Ø55mm	55.8mm	58.8mm	50 kgs / per castor
STW551	brake	hard wheel				
STW55U	non-brake	soft wheel	Ø55mm	55.8mm	58.8mm	50 kgs / per castor
STW551U	brake	soft wheel				

\* Various top fixing stems are available. See page 250 & 251

# 12-1 Unhooded Castors

## Solid-II Unhooded Twin Wheel Castors

- \* Ø65 and Ø80mm twin wheels
- \* Hard wheel: all nylon
- \* Soft wheel: nylon wheel with PU tread
- \* Colors:
  - All black (BB)
  - Silver gray wheel with white beam and caps (YWT)
- \* Loading capacity: 60 kgs



STW651U-YWT  
(brake)



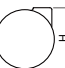
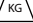
STW65U-YWT



STW80-YWT

STW801-YWT  
(brake)

Wheel Castors

Item No.	Type	wheel	Dia.	W	H	Static Loading capacity
						
STW65	non-brake	hard wheel	Ø65mm	53mm	67mm	60 kgs / per castor
STW651	brake					
STW65U	non-brake	soft wheel				
STW651U	brake					
STW80	non-brake	hard wheel	Ø80mm	45mm (slim wheel)	83mm	60 kgs / per castor
STW801	brake					
STW80U	non-brake	soft wheel				
STW801U	brake					

\* Various top fixing stems are available. See page 250 & 251

# 12-1 Unhooded Castors

## Slim Unhooded Twin Wheel Castors

- \* High quality nylon wheel in black (B) or gray (Y)
- \* Colors: silver coated (SV) or silver gray color (SY) on hub cap and beam
- \* Elegant style and high quality



FMF50YSV-2SV-PT42  
(brake)



FMF60YSV-1SV-PT42



FMF75BSV-1SV-PT502



FMF100BSV-2SV-PT63  
(brake)

Item No.	Type	Dia. 	W 	H 	Static Loading capacity 
FMF50-1 FMF50-2	non-brake brake	Ø50mm	41mm	62.5mm	50 kgs / per castor
FMF60-1 FMF60-2	non-brake brake	Ø60mm	45mm	72.5mm	60 kgs / per castor
FMF75-1 FMF75-2	non-brake brake	Ø75mm	47mm	86.2mm	80 kgs / per castor
FMF100-1 FMF100-2	non-brake brake	Ø100mm	52mm	116mm	80 kgs / per castor

\* Various top fixing stems are available. See page 250 & 251

# 12-2 Hooded Castors

## Metallic Hooded Twin Wheel Castors

- \* Nylon twin wheels with zamak hood and ABS caps
- \* Finish of hood & caps: polished chrome or satin chrome electroplating
- \* Wheel color: black



Item No.	Type	Dia.	W	Mounting Height			Static Loading capacity
				plate stem	thread stem	friction stem	
LCD40	non-brake	Ø40mm	39mm	61mm	54mm	53.5mm	40 kgs / per castor
LCD401	brake						
LCD50	non-brake	Ø50mm	51mm	71mm	66mm	64mm	50 kgs / per castor
LCD501	brake						

\* Various top fixing stems are available. See page 250 & 251

## Translucent Hooded Twin Wheel Castors

- \* Translucent hood of PC material
- \* Nylon wheel in white, sea blue, lemon green, pink or orange



(translucent white / white)



(translucent blue / blue)



(translucent red / red)

Item No.	Type	Dia.	W	H	Static Loading capacity

\* Various top fixing stems are available. See page 250 & 251

# 12-2 Hooded Castors

## Chair Castors

- \* Hooded wheels of nylon
- \* Soft PU tread available
- \* Standard neck Ø38mm (also available in Ø27, Ø32, Ø42 & Ø45mm)
- \* Three brake types:
  - visible press brake (PB)
  - invisible sit brake (IB)
  - stand-up brake (SB)
- \* Various colors are available



Item No.	Type	Dia.	W	Neck dia.	Mounting Height				Static Loading capacity
					plate stem	thread stem	friction stem	socket stem	
CH5038	non-brake	Ø50mm	56mm	Ø38mm	68mm	64mm	62.3mm	61mm	50 kgs / per castor
CH50381	brake								

\* Various top fixing stems are available. See page 250 & 251

## EJ50 Hooded Twin Wheel Castors

- \* Materials : all nylon (hard wheel) or nylon wheel with PU tread (soft wheel)
- \* Wheel colors : all black or black & gray
- \* Material of hood: stainless steel or nylon



EJ501U



EJ50NH

Item No.	Type	Wheel	Dia.	W	H	Static Loading capacity
EJ50	non-brake	hard wheel				
EJ501	brake					
EJ50U	non-brake	soft PU wheel	Ø50mm	51.5mm	55mm	50 kgs / per castor
EJ501U	brake					
EJ50NH	non-brake	stainless hood & hard wheel				
EJ501NH	brake					

\* Various top fixing stems are available. See page 250 & 251



EJ501NH

# 12-2 Hooded Castors

## BASIC Hooded Twin Wheel Castors

- \* Material: all nylon
- \* Finishes of hood: vacuum electroplating (bright chrome, satin chrome, satin nickel and bright brass) or coating (silver gray)
- \* Colors of wheel: black, gray, silver gray and white



BSC30  
(Ø30mm)



BSC401  
(Ø40mm)



BSC601  
(Ø60mm)



BSC50  
(Ø50mm)

Item No.	Type	Dia.	W	H	Static Loading capacity
BSC30	non-brake	Ø30mm	31.5mm	34mm	15 kgs / per castor
BSC301	brake	Ø30mm	31.5mm	34mm	15 kgs / per castor
BSC40	non-brake	Ø40mm	40mm	45mm	30 kgs / per castor
BSC401	brake	Ø40mm	40mm	45mm	30 kgs / per castor
BSC50	non-brake	Ø50mm	44mm	56mm	45 kgs / per castor
BSC501	brake	Ø50mm	44mm	56mm	45 kgs / per castor
BSC60	non-brake	Ø60mm	53mm	65mm	50 kgs / per castor
BSC601	brake	Ø60mm	53mm	65mm	50 kgs / per castor

\* Various top fixing stems are available. See page 250 & 251

## BASIC-U Hooded Twin Wheel Castors

- \* Material: nylon wheel with soft PU tread



non-brake



brake

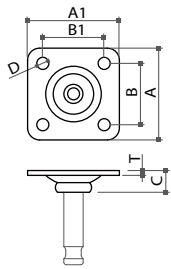
Item No.	Type	Dia.	W	Mounting Height				Static Loading capacity
				plate stem	thread stem	friction stem	socket stem	
BSC440	non-brake	Ø40mm	41mm	58.5mm	53mm	53mm	52mm	40 kgs / per castor
BSC441	brake	Ø40mm	41mm	58.5mm	53mm	53mm	52mm	40 kgs / per castor
BSC550	non-brake	Ø53mm	50mm	71mm	65mm	66mm	65mm	50 kgs / per castor
BSC551	brake	Ø53mm	50mm	71mm	65mm	66mm	65mm	50 kgs / per castor

\* Various top fixing stems are available. See page 250 & 251

# 12-2 Hooded Castors

Top fixing stems - for hooded and unhooded twin wheel castors

## 1) Swivel plate stem

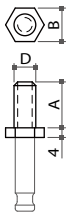


Item No.	Ax A1	BxB1	C	D	T
PT12	38x38	25.4x25.4	9	Ø5.2	2
PT13	38x38	27x27	9	Ø5.2	2
PT42	42x42	32x32	9	Ø5.2	2
PT502	50x50	38x38	9	Ø5.2	2
PT3052	30x50	20x40	9	Ø5.2	2
PT3053	30x50	20x40	10	Ø5.6	3

unit: mm



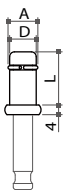
## 2) Threaded stem



Item No.	D	A	B
T6	M6	12, 15, 20mm	11mm
T8	M8	12, 15, 20, 25mm	12.7mm
T10	M10	15, 20, 25mm	14mm
T12	M12	15, 25 mm	17mm
T1/4	1/4-20	1/2", 5/8", 3/4", 15/16", 1", 1-1/8"	11mm
T5/16	5/16-18	3/8", 1/2", 3/4", 7/8", 1", 1-1/2", 1-5/8"	12.7mm
T3/8	3/8-16	1/2", 5/8", 3/4", 1", 1-3/8", 1-1/2"	14mm
T1/2	1/2-12 (13)	5/8", 1", 1-3/16"	17mm



## 3) Friction ring stem

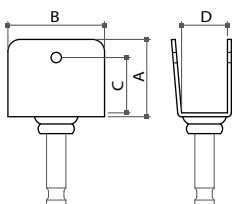


Item No.	D	L	A
F6	Ø6	19	Ø6.5
F8	Ø8	25	Ø8.6
F10	Ø10	20, 25	Ø10.8
F11	Ø11	22, 25, 32, 38	Ø11.8

unit: mm



## 4) U-bracket fixing stem



Item No.	A	B	C	D
53091	34	40	26	16.2 (5/8")
53092	34	40	24.5	19.5 (3/4")
53093	32	40	23	22.6 (7/8")

unit: mm

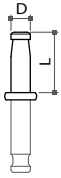




# 12-2 Hooded Castors

Top fixing stems - for hooded and unhooded twin wheel castors

## 5) Socket (knock-in) stem

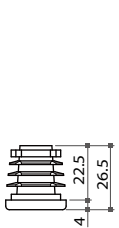


Item No.	D	L
P31	Ø8mm	25mm
P3	Ø8mm	38mm



## 6) Plastic tube insert:

\* For socket Ø8x25mm or threaded M8x25mm, 5/16-18x25mm



Round type

Item No.	A
ST19	Ø19mm
ST22	Ø22.2mm
ST25	Ø25.3mm
ST31	Ø31.6mm
ST38	Ø38mm

Square type

Item No.	A
SS19	19mm
SS22	22.2mm
SS25	25.3mm
SS31	31.6mm
SS38	38mm



Round type



Square type

## 7) Bushing:

\* For socket Ø8x38mm L.

<p>S61</p>	<p>S63</p>	<p>S632</p>
<p>S633</p>	<p>S635</p>	<p>S393</p>



S61



S63



S632



S633



S635

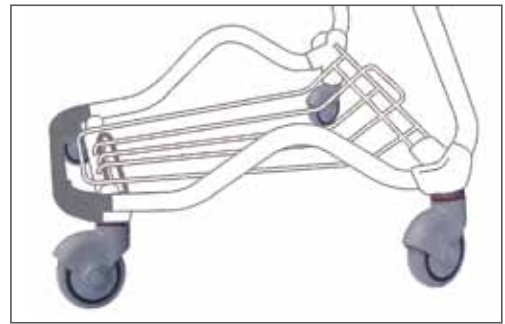


S393

# 12-3 Medical & Industrial Castors

## TSC Trolley Single Wheel Castor

- \* Plastic housing of polyamide
- \* PP wheel with TPE tread
- \* Applicable to trolley and shopping cart



non-brake



brake  
(wheel locking only)

Item No.	Type	Dia.	W	H	Static Loading capacity
TSC75	non-brake	Ø75mm	26mm	101mm	60 kgs / per castor
TSC100	non-brake	Ø100mm	28mm	136mm	80 kgs / per castor
TSC1001	brake	Ø100mm	28mm	136mm	80 kgs / per castor
TSC125	non-brake	Ø125mm	30mm	163mm	90 kgs / per castor

# 12-3 Medical & Industrial Castors

## MSC Medical Single Wheel Castor

- \* Plastic housing of polyamide and glass fiber
- \* PP wheel with TPE tread
- \* Cover in PP
- \* **Waterproof** stainless steel stem and swivel resists rust
- \* Applicable to medical, industrial, bathroom, kitchen and outdoor equipments



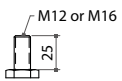
non-brake



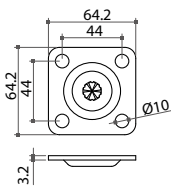
double brake  
(total locking)

### Stem Type:

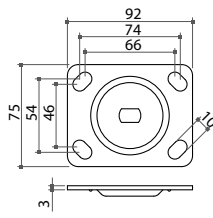
A) Thread Bolt stem:



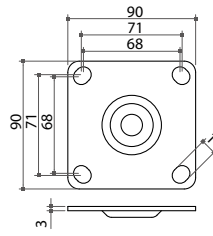
B) Plate stem:



PT64



PT9275



PT90

Item No.	Type	Dia. 	W 	Mounting Height		Dynamic Loading capacity 
				plate stem 	thread stem 	
MSC75	non-brake	Ø75mm	28mm	129mm	122.5mm	60 kgs / per castor
MSC751	double brake			(for PT64)		
MSC100	non-brake	Ø100mm	30mm	158mm	156mm	70 kgs / per castor
MSC1001	double brake			(for PT90)	(for PT9275)	
MSC125	non-brake	Ø125mm	32mm	183.5mm	181.5mm	80 kgs / per castor
MSC1251	double brake			(for PT90)	(for PT9275)	

# 12-3 Medical & Industrial Castors

## MTC Trolley Twin Wheel Castors

- \* Plastic housing of polyamide and glass fiber
- \* Polyamide wheel with TPE tread
- \* Cover in PP
- \* Applicable to trolley and shopping cart



non-brake



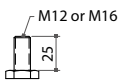
double brake  
(total locking)



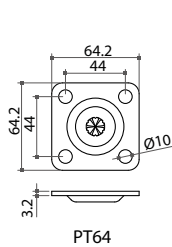
one-way roll  
(fixed)

### Stem Type:

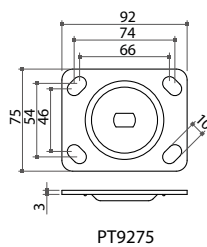
A) Thread Bolt stem:



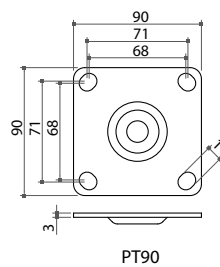
B) Plate stem:



PT64



PT9275



PT90

Item No.	Type	Dia.	W	Mounting Height		Dynamic Loading capacity	
				plate stem	thread stem		
MTC75	non-brake	Ø75mm	52mm	104mm (for PT64)	--	70 kgs / per castor	
MTC751	double brake				95mm		
MTC755	one way roll						
MTC100	non-brake	Ø100mm	64mm	131.5mm (for PT90)	129.5mm (for PT9275)	80 kgs / per castor	
MTC1001	double brake						122.5mm
MTC1005	one way roll						
MTC125	non-brake	Ø125mm	74mm	157.5mm (for PT90)	155.5mm (for PT9275)	90 kgs / per castor	
MTC1251	double brake						149mm
MTC1255	one way roll						

# 12-3 Medical & Industrial Castors

## MSTC Medical Twin Wheel Castors

- \* Plastic housing of polyamide and glass fiber
- \* Polyamide wheel with PU tread
- \* Applicable to medical, industrial, bathroom, kitchen and outdoor equipments
- \* Multiple ball bearing assists in smooth rolling and swivel
- \* Glazed surface
- \* Extra heavy duty for application to medical, trolley and industrial fields



non-brake



double brake  
(total locking)

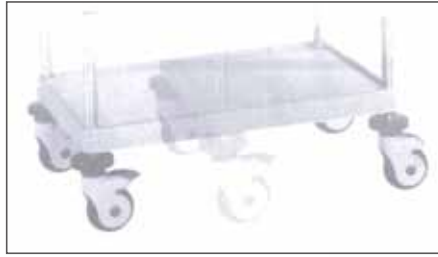
Wheel Castors

Item No.	Type	Dia.	W	H	Dynamic Loading capacity
MSTC100	non-brake				
MSTC1001	double brake	Ø100mm	70mm	120.5mm	90 kgs / per castor
MSTC125	non-brake	Ø125mm	76mm	139.5mm	100 kgs / per castor
MSTC1251	double brake				

# 12-3 Medical & Industrial Castors

## MBSC Medical Bed Castor - single wheel

- \* Plastic housing of polyamide and glass fiber
- \* PP wheel with TPE tread
- \* Cover in PP
- \* Applicable to nursing beds and operation tables
- \* Multiple features seletions: total lock, free swivel or direction lock

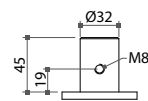
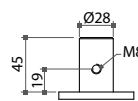
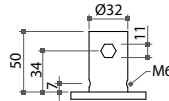
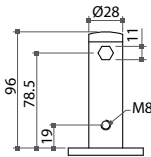
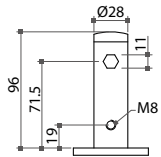


Item No.	Dia.	W	Height	Dynamic Loading capacity
MBSC125	Ø125mm	32mm	171mm	120 kgs / per castor
MBSC150	Ø150mm	32mm	198.5mm	150 kgs / per castor
MBSC200	Ø200mm	35mm	240mm	150 kgs / per castor

12

Wheel Castors

\* Various top stems (For both MBSC and MBTC castors)



## MBTC Medical Bed Castor - Twin wheels

- \* Plastic housing of polyamide and glass fiber
- \* Polyamide wheel with TPE tread
- \* Cover in PP
- \* Applicable to nursing beds and operation tables
- \* Multiple features seletions: total lock, free swivel or direction lock

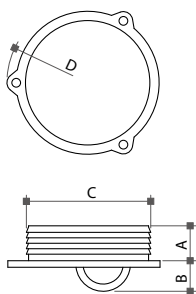


Item No.	Dia.	W	Height	Dynamic Loading capacity
MBTC125	Ø125mm	85mm	150mm	120 kgs / per castor
MBTC150	Ø150mm	85mm	175mm	150 kgs / per castor

# 12-4 Other Castors

## Recessed Wheel Castor

\* Material: nylon (PA) in black



unit: mm

Item No.	Type	A	B	C	D
PED46	swivel	18	10	46	29
PED57	swivel	16	14	57	37
PED571	non-swivel				
PED65	swivel	17.5	23	65	42.5

# 12-4 Other Castors

## Shell Single Wheel Castor

- \* Plastic wheel with metal caps in nickel, chrome plating or other finishes
- \* Socket stem with ball bearing swivel



Item No.	Dia.	W	H	Static Loading capacity
SWS501	Ø50mm	8.8mm	60.5mm	30 kgs / per castor
SWS751	Ø75mm	12.7mm	94mm	40 kgs / per castor

## Fixed Castor

- \* one-way rolling
- \* Steel supporter and plastic roller

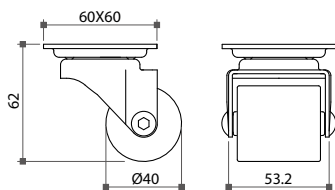


Item No.	Dia.	W	H	Top size (Ax B / C)
FWC25	Ø25.5mm	13.3mm	28mm	42.3x18.3 / 32mm
FWC251	Ø25.5mm	13.3mm	35.3mm	47x18.8 / 38mm
FWC32	Ø32mm	13.3mm	38.5mm	47x18.8 / 38mm
FWC40	Ø40mm	16mm	43.5mm	58x23.4 / 46mm
FWC56	Ø56.5mm	29.8mm	65.5mm	60x37.1 / 44mm
FWC35	Ø35mm	12.6mm	40.5mm	63.2x21.6 / 48mm



**TPA40 Nylon Single Wheel Castor**

- \* With solid nylon wheel (Ø40mm)
- \* Heavy duty loading: 90 kgs / pc
- \* Low-profile wheel only 62mm overall height
- \* Steel ball bearing swivel and square top plate stem



TPA40WT-220BN-PT2A  
(brake)

TPA40WT-21BN-PT2A  
(non-brake)

**Ball Castor**

- \* With ball bearing swivel
- \* Metal hood in chrome, brass, antique brass or antique copper plating
- \* PP ball in black or grey, or rubber ball in black
- \* Stem types: plate, threaded, friction ring and socket+bushing



BAL150 (PP / black)

BAL150 (PP / grey)



BAL240 (rubber / black)

Item No.	Ball	Dia.	H	Static loading capacity
BAL140	PP	Ø40mm	56mm	○
BAL240	rubber	Ø40mm	56mm	○
BAL150	PP	Ø50mm	6	40 kgs / per castor
BAL250	rubber	Ø50mm	6	40 kgs / per castor

\* Various top fixing stems are available. See page 250 & 251

**SO3565 Single Wheel Castor**

- \* Nylon wheel core with soft polyurethane (PU) tread
- \* Castor neck Ø35mm, with F25 friction ring stem Ø11x25mmL.
- \* Passed in-house testing in accordance with ANSI / BIFMA requirements



SO3565LCSV-F25 (translucent matt / silver coated)



SO3565DYBB-F25 (dark gray / black)



SO3565LCSY-F25 (translucent matt / silver gray)

Item No.	Dia.	W	H	Static Loading capacity
SO3565	Ø65mm	24.5mm	87.8mm	50 kgs / per castor

Алматы (7273)495-231  
Ангарск (3955)60-70-56  
Архангельск (8182)63-90-72  
Астрахань (8512)99-46-04  
Барнаул (3852)73-04-60  
Белгород (4722)40-23-64  
Благовещенск (4162)22-76-07  
Брянск (4832)59-03-52  
Владивосток (423)249-28-31  
Владикавказ (8672)28-90-48  
Владимир (4922)49-43-18  
Волгоград (844)278-03-48  
Вологда (8172)26-41-59  
Воронеж (473)204-51-73  
Екатеринбург (343)384-55-89

Иваново (4932)77-34-06  
Ижевск (3412)26-03-58  
Иркутск (395)279-98-46  
Казань (843)206-01-48  
Калининград (4012)72-03-81  
Калуга (4842)92-23-67  
Кемерово (3842)65-04-62  
Киров (8332)68-02-04  
Коломна (4966)23-41-49  
Кострома (4942)77-07-48  
Краснодар (861)203-40-90  
Красноярск (391)204-63-61  
Курск (4712)77-13-04  
Курган (3522)50-90-47  
Липецк (4742)52-20-81

Магнитогорск (3519)55-03-13  
Москва (495)268-04-70  
Мурманск (8152)59-64-93  
Набережные Челны (8552)20-53-41  
Нижний Новгород (831)429-08-12  
Новокузнецк (3843)20-46-81  
Ноябрьск (3496)41-32-12  
Новосибирск (383)227-86-73  
Омск (3812)21-46-40  
Орел (4862)44-53-42  
Оренбург (3532)37-68-04  
Пенза (8412)22-31-16  
Петрозаводск (8142)55-98-37  
Псков (8112)59-10-37

Пермь (342)205-81-47  
Ростов-на-Дону (863)308-18-15  
Рязань (4912)46-61-64  
Самара (846)206-03-16  
Саранск (8342)22-96-24  
Санкт-Петербург (812)309-46-40  
Саратов (845)249-38-78  
Севастополь (8692)22-31-93  
Симферополь (3652)67-13-56  
Смоленск (4812)29-41-54  
Сочи (862)225-72-31  
Ставрополь (8652)20-65-13  
Сургут (3462)77-98-35  
Сыктывкар (8212)25-95-17  
Тамбов (4752)50-40-97

Тверь (4822)63-31-35  
Тольятти (8482)63-91-07  
Томск (3822)98-41-53  
Тула (4872)33-79-87  
Тюмень (3452)66-21-18  
Ульяновск (8422)24-23-59  
Улан-Удэ (3012)59-97-51  
Уфа (347)229-48-12  
Хабаровск (4212)92-98-04  
Чебоксары (8352)28-53-07  
Челябинск (351)202-03-61  
Череповец (8202)49-02-64  
Чита (3022)38-34-83  
Якутск (4112)23-90-97  
Ярославль (4852)69-52-93

Россия +7(495)268-04-70

Казахстан +7(7172)727-132

Киргизия +996(312)96-26-47

[www.fourwinds.nt-rt.ru](http://www.fourwinds.nt-rt.ru) | | [fse@nt-rt.ru](mailto:fse@nt-rt.ru)